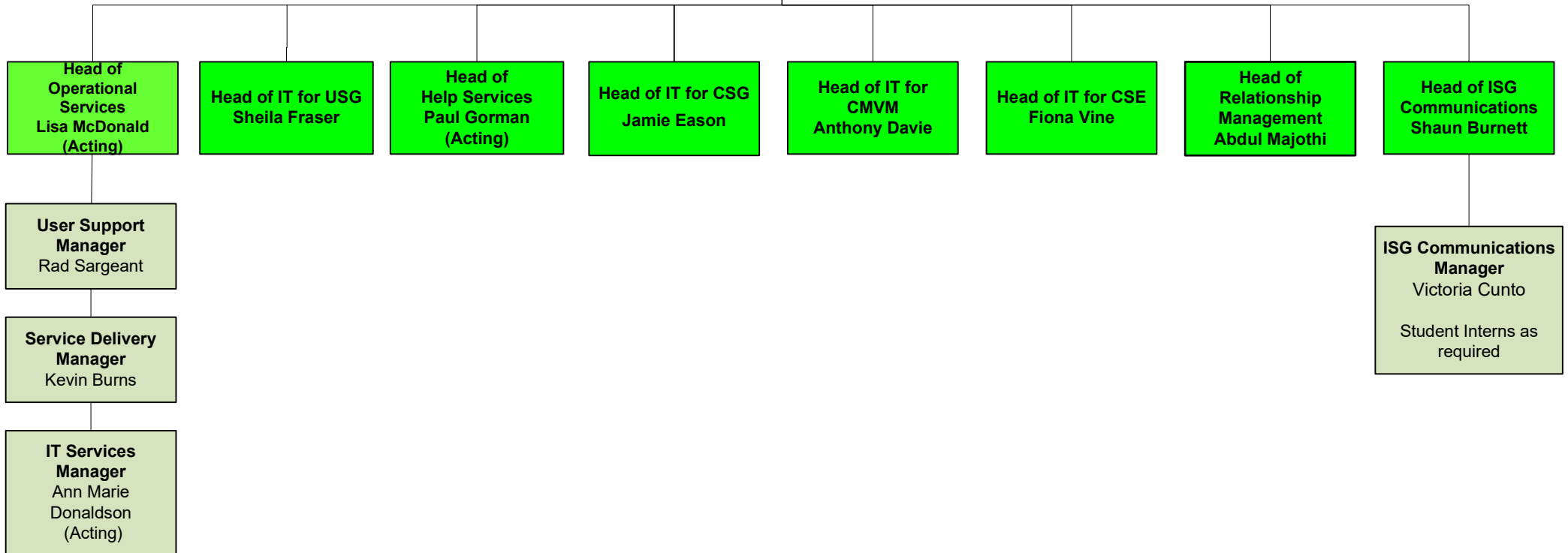


**Information Services
User Services Directorate
May 2026**

**Director
Ingrid Fehr**

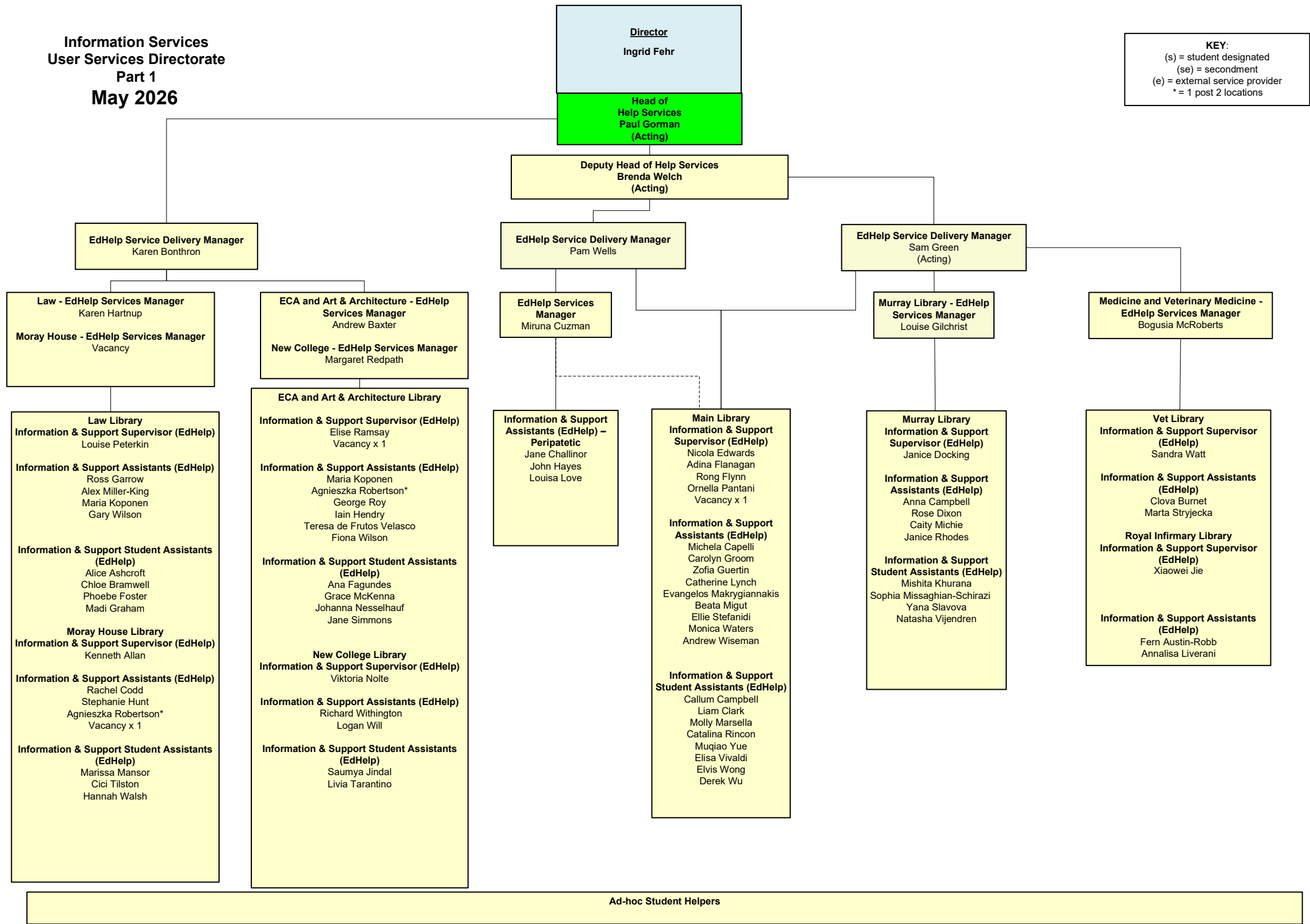
**ISG Business Admin
Lynn Hall**

KEY:
(s) = student designated
(se) = secondment
(e) = external service provider
* = 2 posts



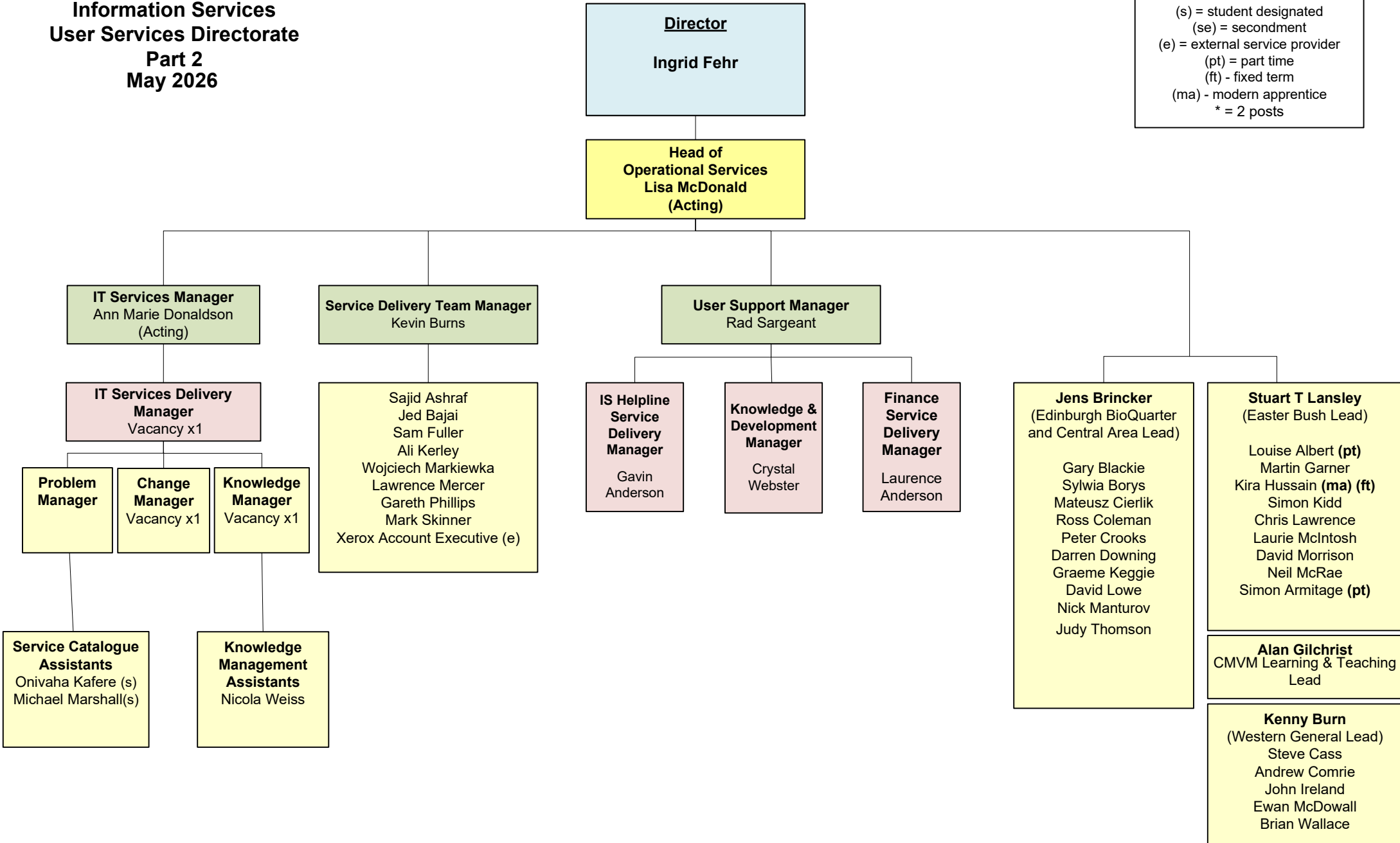
**Information Services
User Services Directorate
Part 1
May 2026**

KEY:
(s) = student designated
(se) = secondment
(e) = external service provider
* = 1 post 2 locations



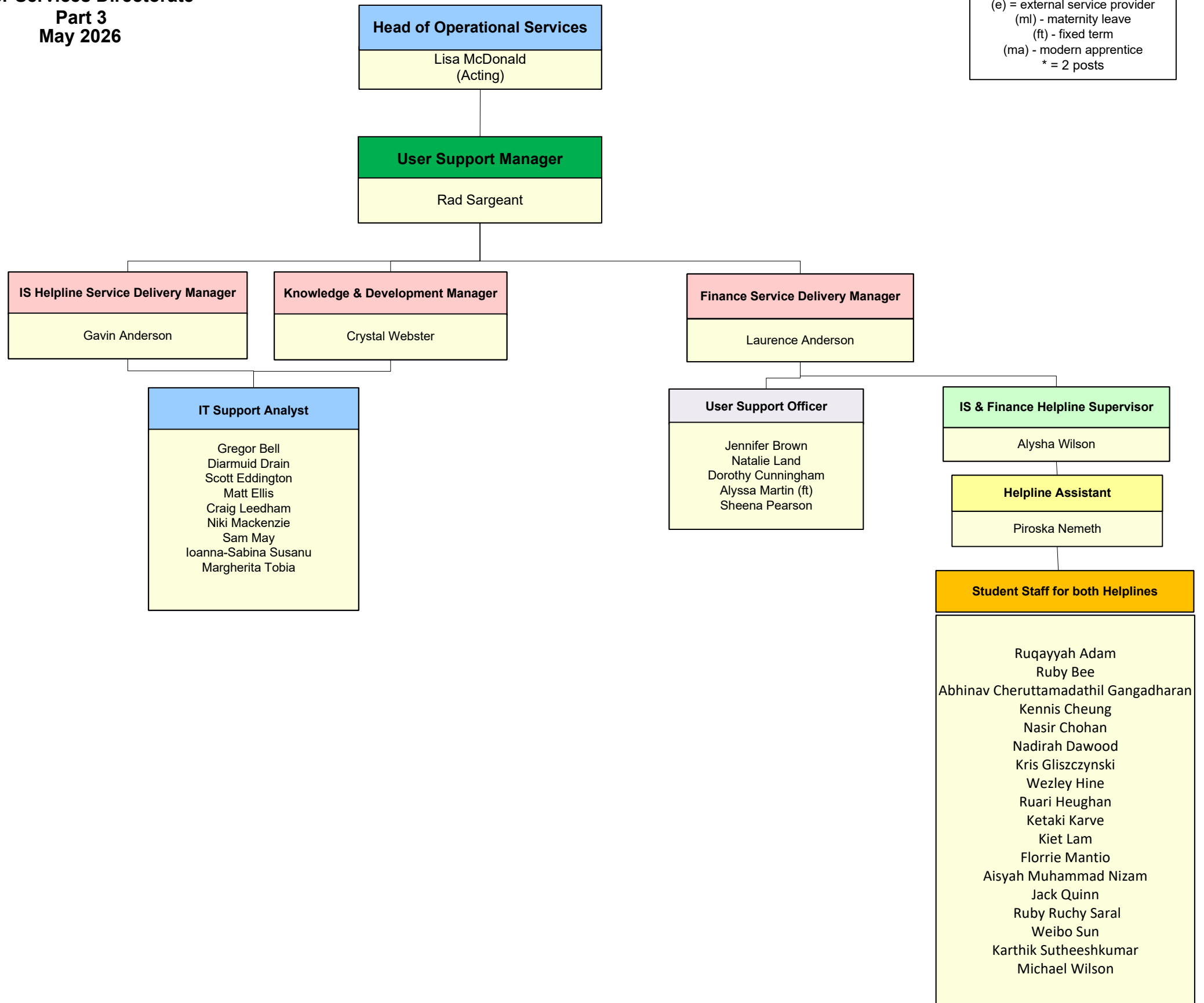
**Information Services
User Services Directorate
Part 2
May 2026**

KEY:
 (s) = student designated
 (se) = secondment
 (e) = external service provider
 (pt) = part time
 (ft) - fixed term
 (ma) - modern apprentice
 * = 2 posts



**Information Services
User Services Directorate
Part 3
May 2026**

KEY:
 (s) = student designated
 (se) = secondment
 (e) = external service provider
 (ml) - maternity leave
 (ft) - fixed term
 (ma) - modern apprentice
 * = 2 posts



**Information Services
User Services Directorate
Part 4
May 2026**

Director
Ingrid Fehr

**Head of ISG
Relationship Management**
Abdul Majothi

Relationship Managers
Myles Ewen
Jonathan Henderson
Alistair Mayze
Rachael Mfoafo
Joost Uding

**Head of ISG
Communications**
Shaun Burnett

**ISG Communications
Manager**
Victoria Cunto
ISG Communications Officer
Jane Bielasheva
Nigel Cheung

**ISG/USG Relationship
Manager**
Rachael Mfoafo

**CAHSS Relationship
Manager**
Joost Uding

**CMVM Relationship
Manager**
Jonathan Henderson

**CSE Relationship
Manager**
Alistair Mayze

**CSG Relationship
Manager**
Myles Ewen

KEY:
(s) = student designated
(se) = secondment
(e) = external service provider
* = 2 posts
= Aligned with College IT Strategy, line
Management remains within USD (Head of
Relationship Management)