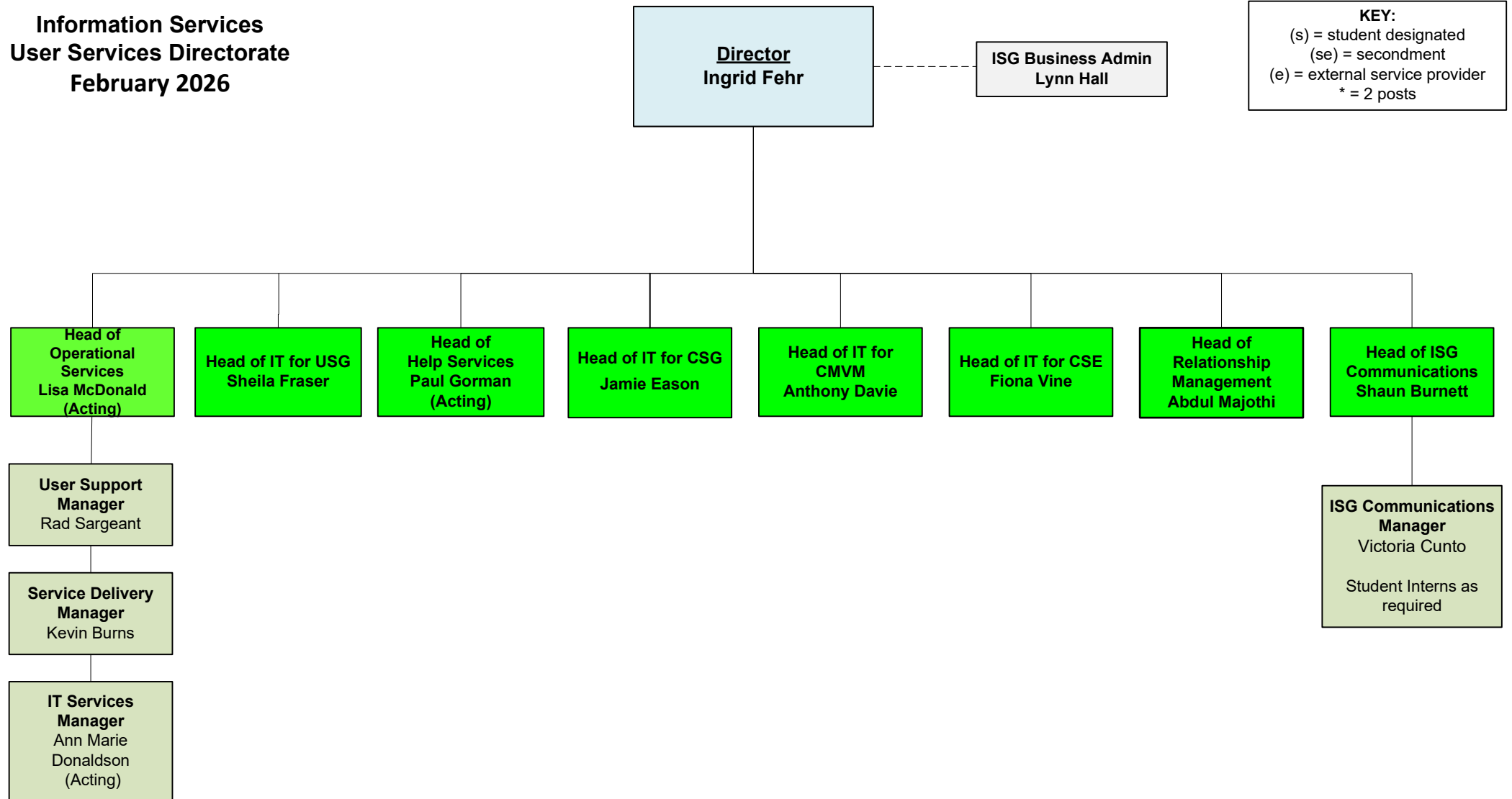
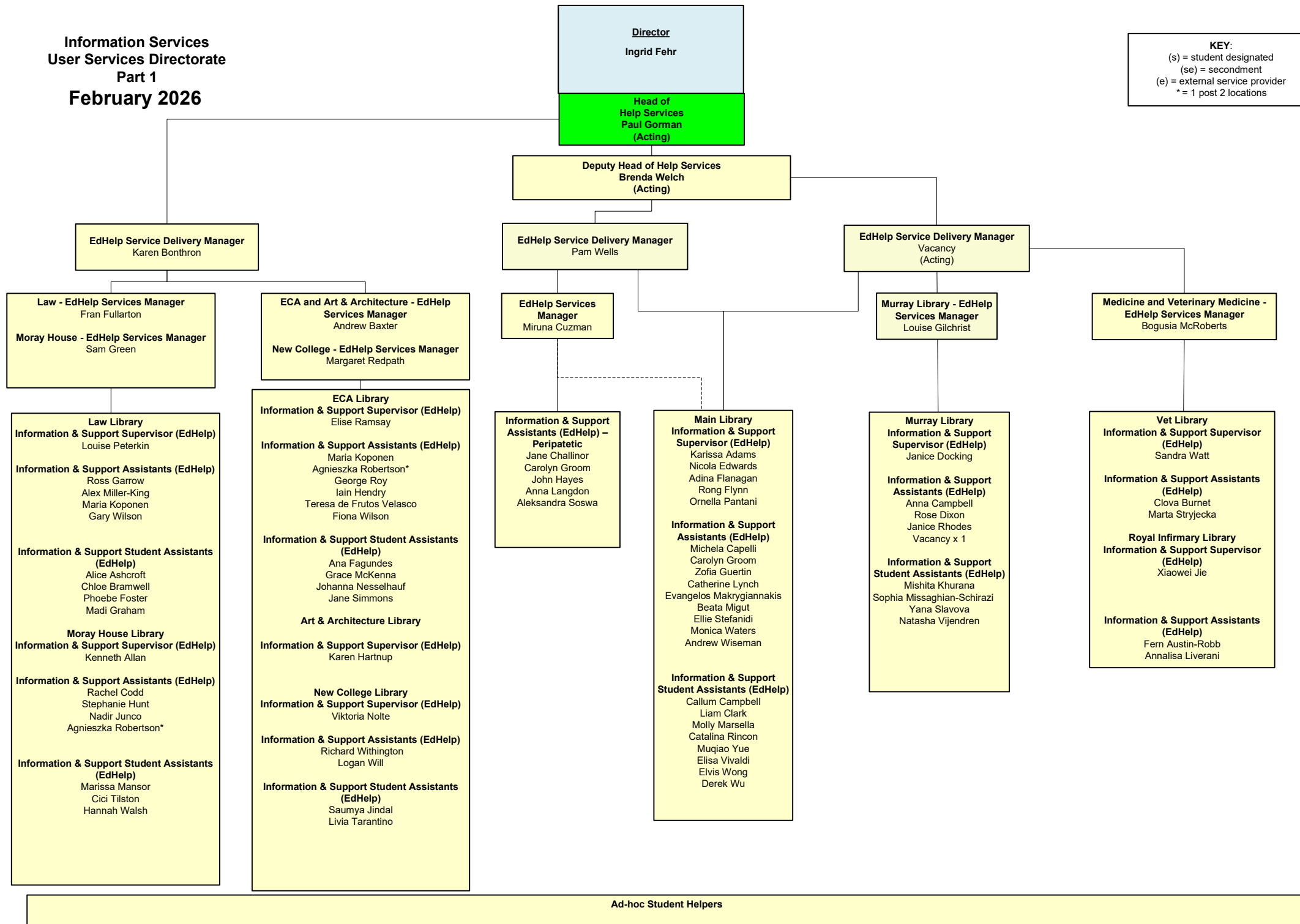


**Information Services
User Services Directorate
February 2026**

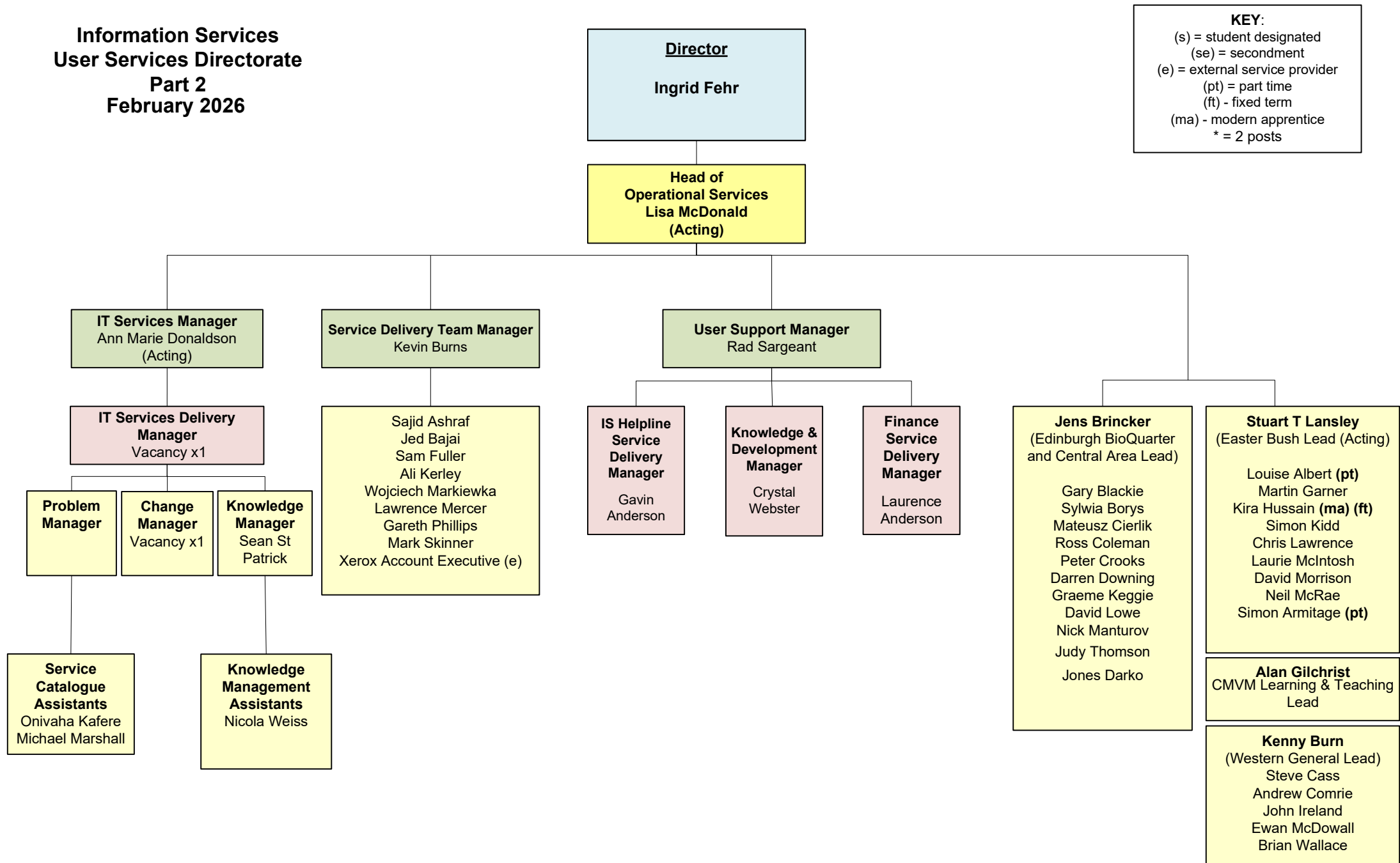


Information Services
User Services Directorate
Part 1
February 2026

KEY:
(s) = student designated
(se) = secondment
(e) = external service provider
* = 1 post 2 locations

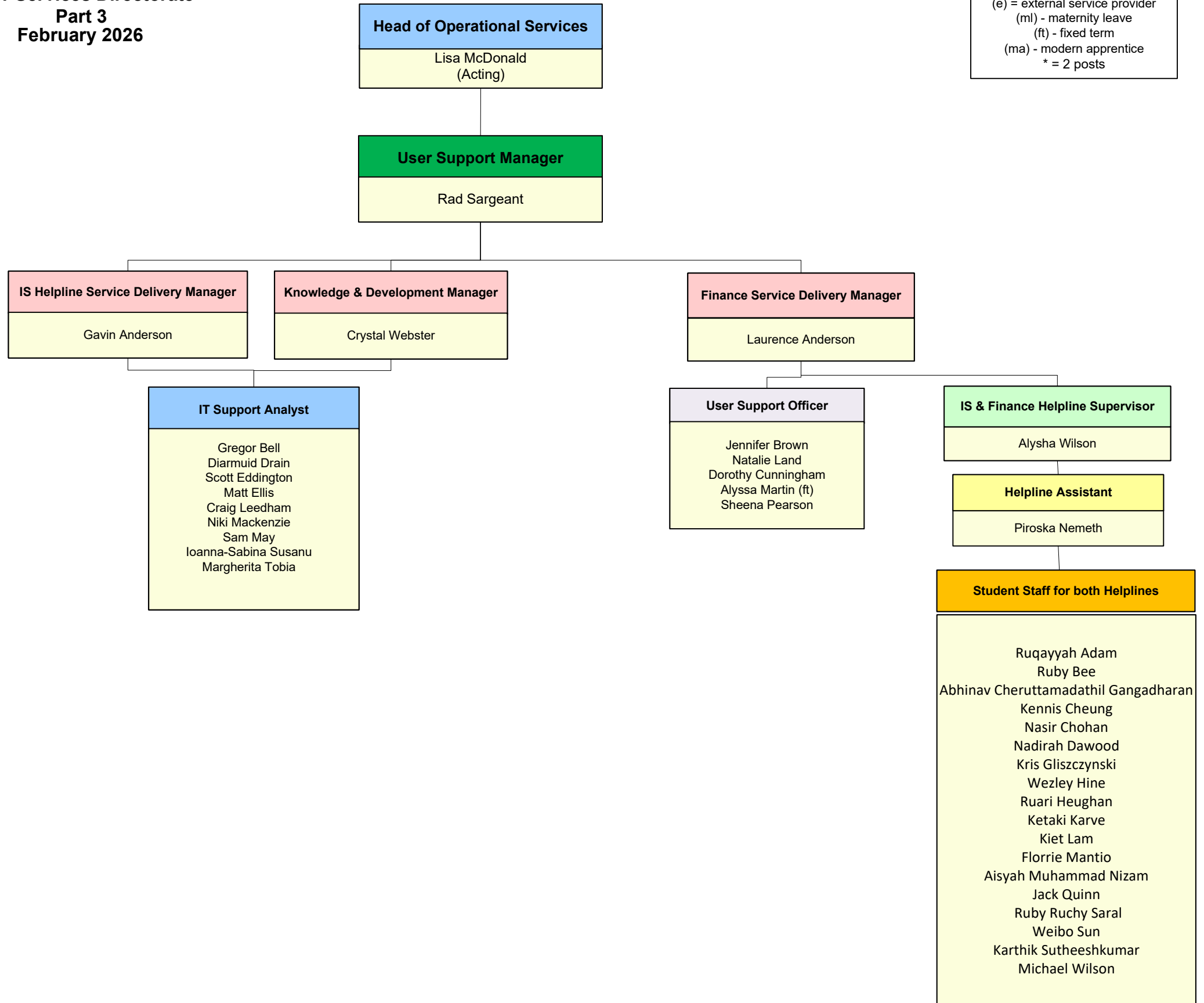


**Information Services
User Services Directorate
Part 2
February 2026**

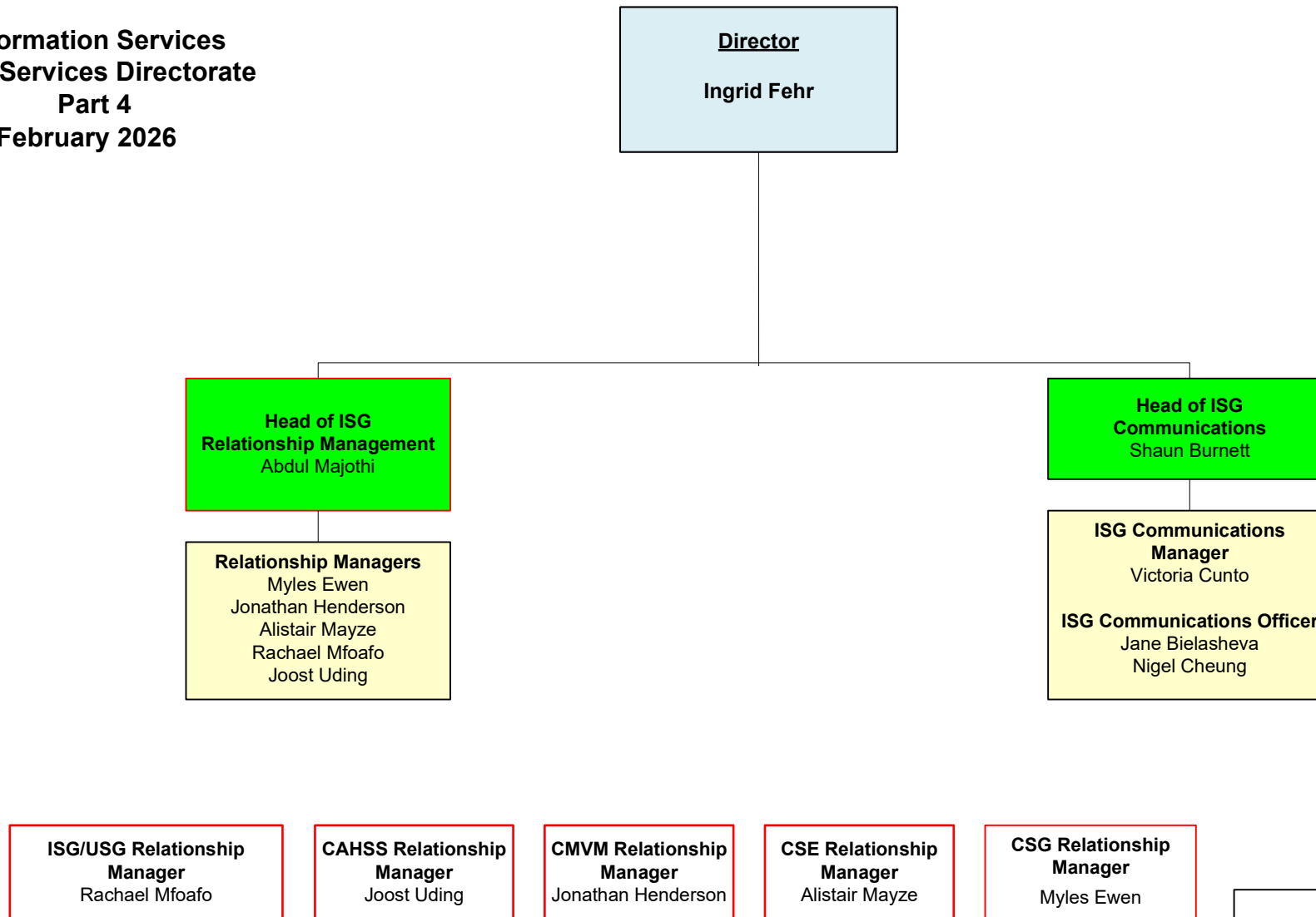


**Information Services
User Services Directorate
Part 3
February 2026**

KEY:
(s) = student designated
(se) = secondment
(e) = external service provider
(ml) - maternity leave
(ft) - fixed term
(ma) - modern apprentice
* = 2 posts



**Information Services
User Services Directorate
Part 4
February 2026**



KEY:
(s) = student designated
(se) = secondment
(e) = external service provider
* = 2 posts
= Aligned with College IT Strategy, line Management remains within USD (Head of Relationship Management)