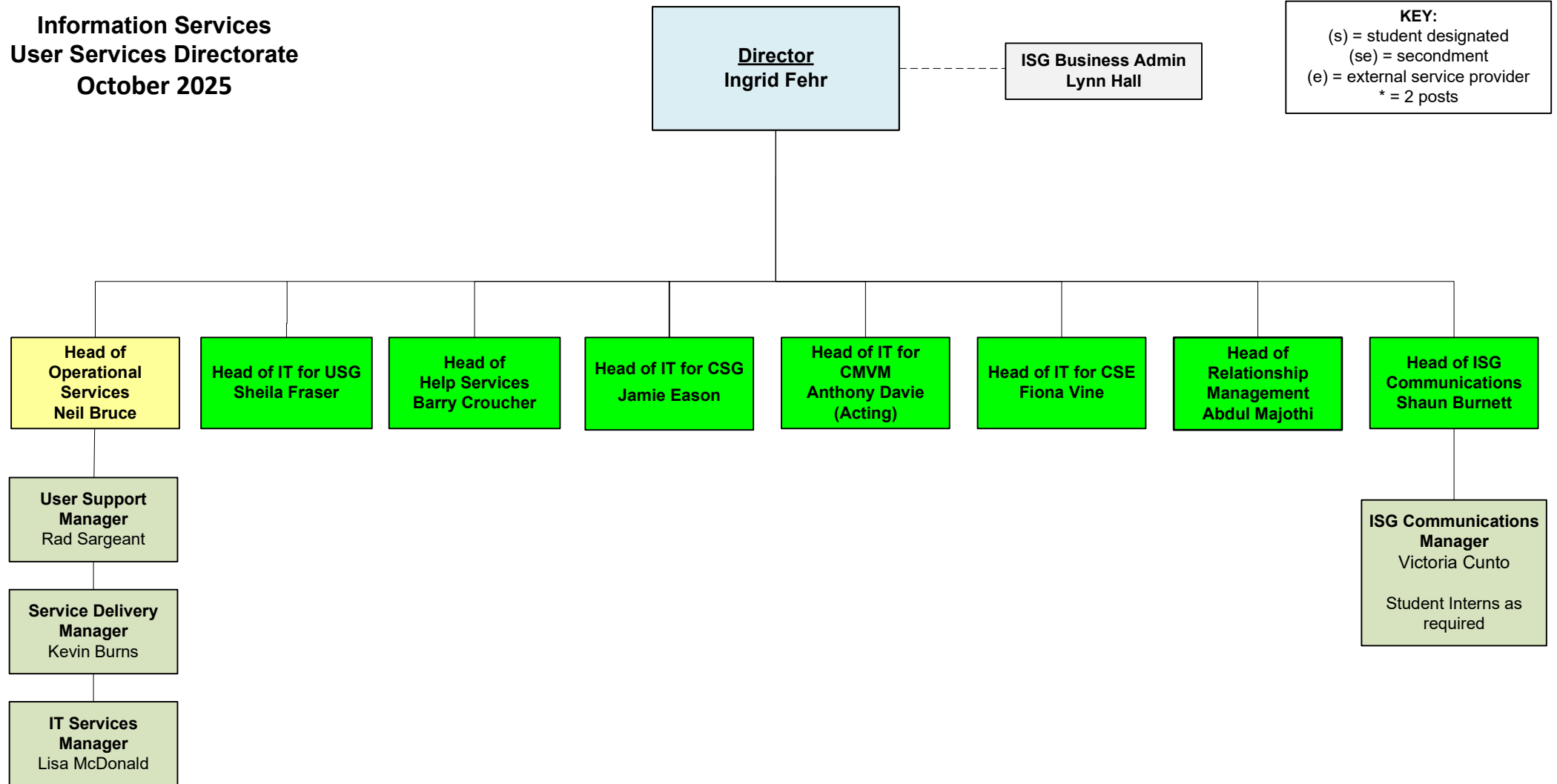
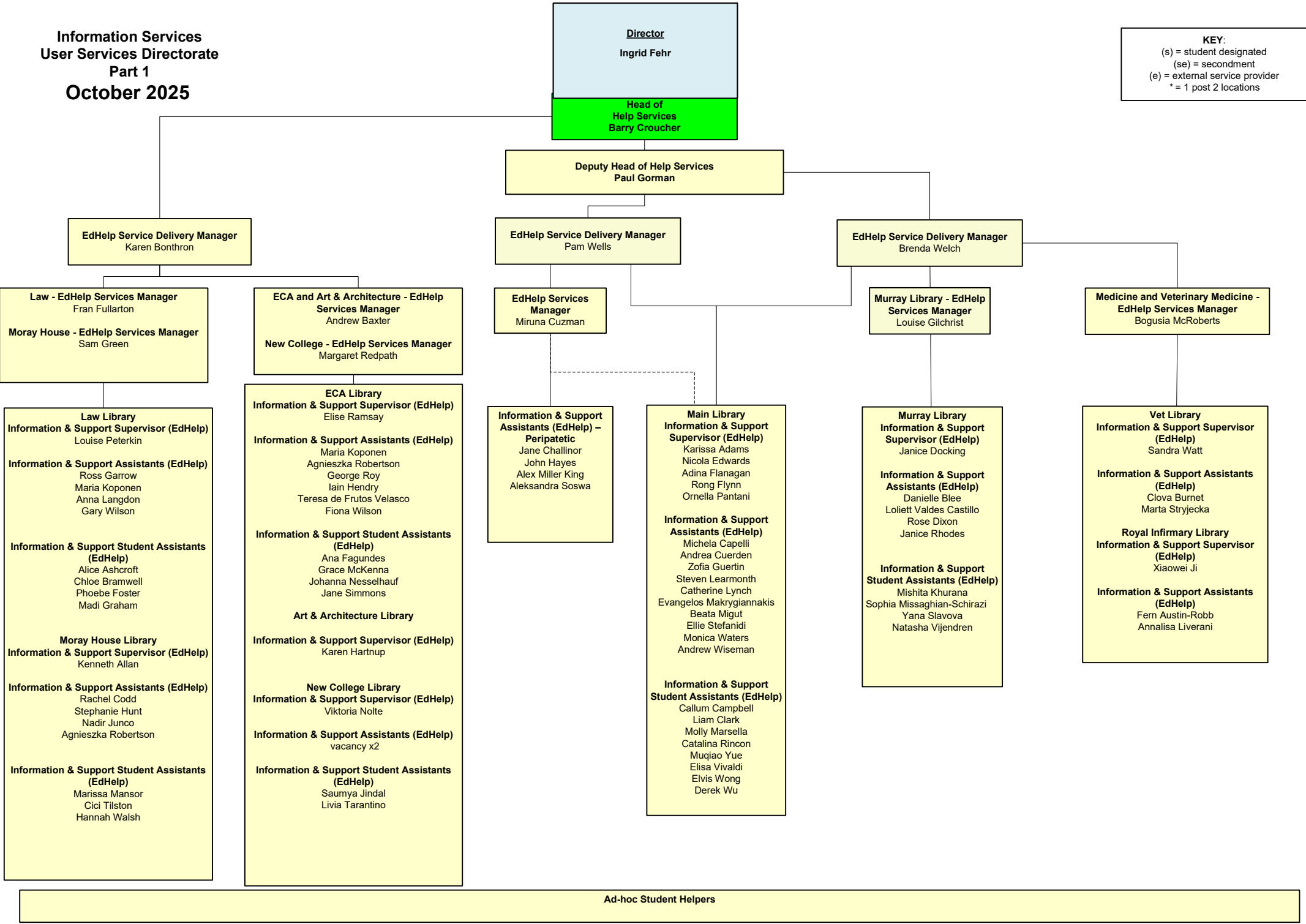


**Information Services
User Services Directorate
October 2025**



Information Services
User Services Directorate
Part 1
October 2025

KEY:
(s) = student designated
(se) = secondment
(e) = external service provider
* = 1 post 2 locations



Information Services
User Services Directorate
Part 2
October 2025

KEY:

(s) = student designated

(se) = secondment

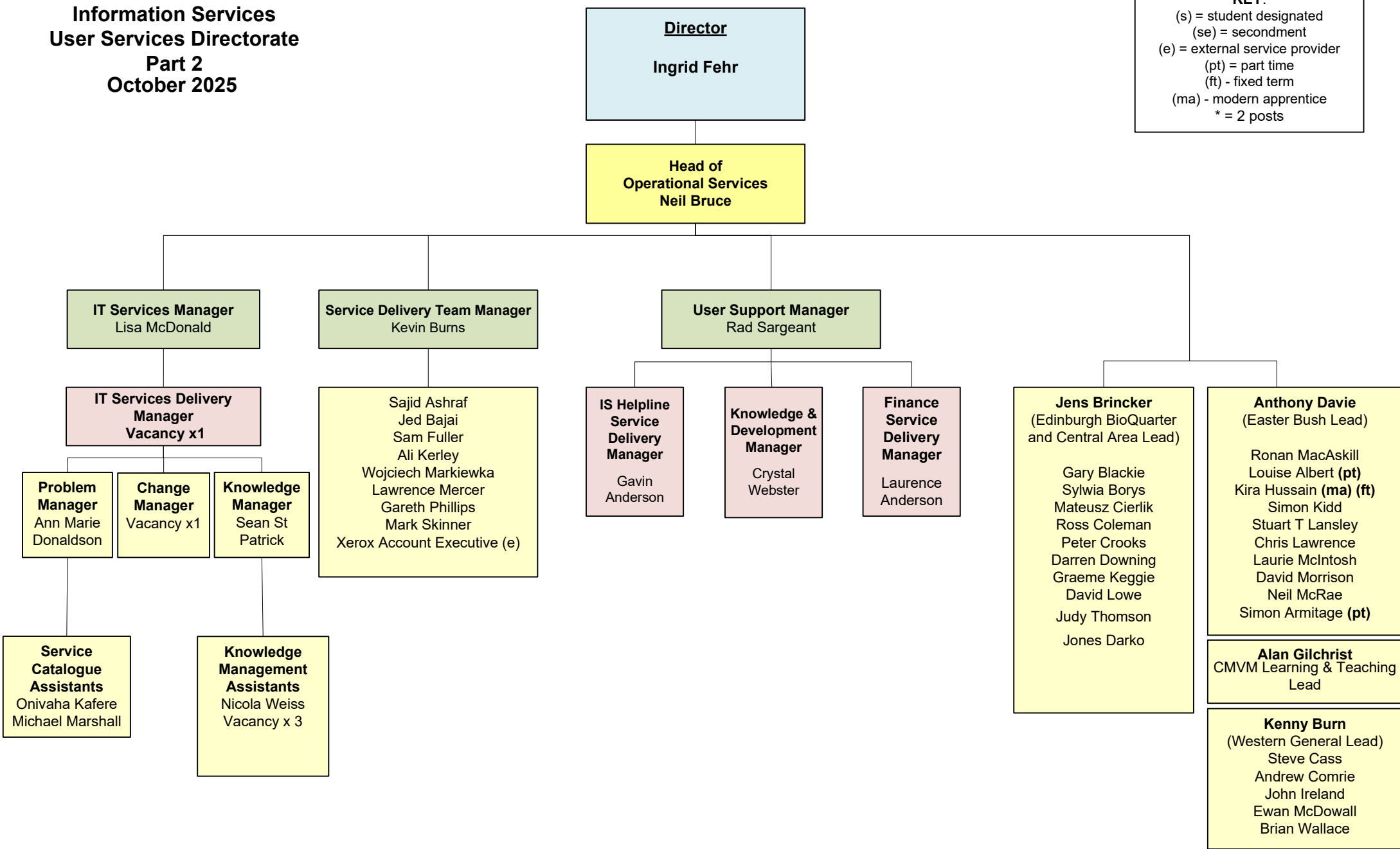
(e) = external service provider

(pt) = part time

(ft) - fixed term

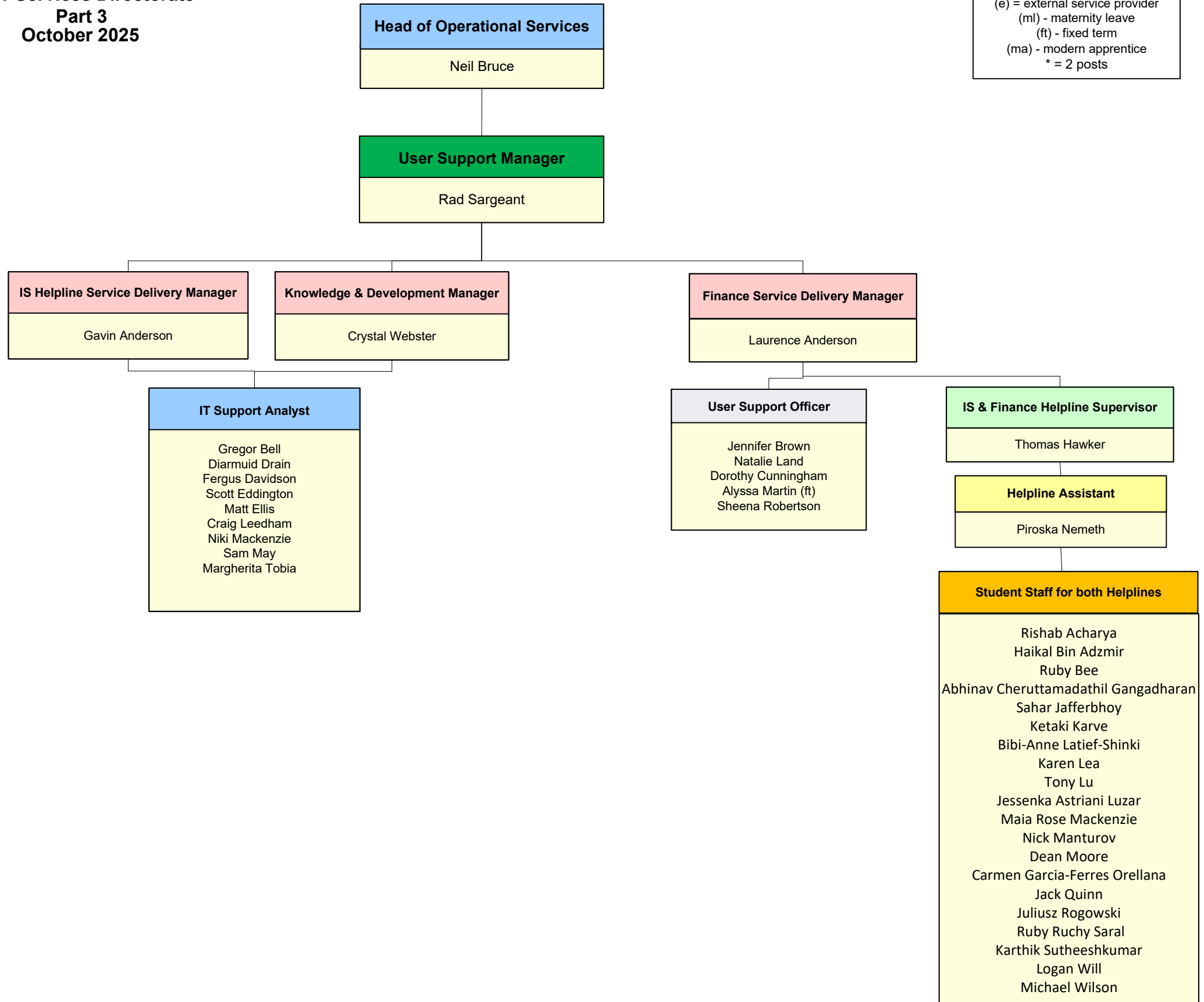
(ma) - modern apprentice

* = 2 posts

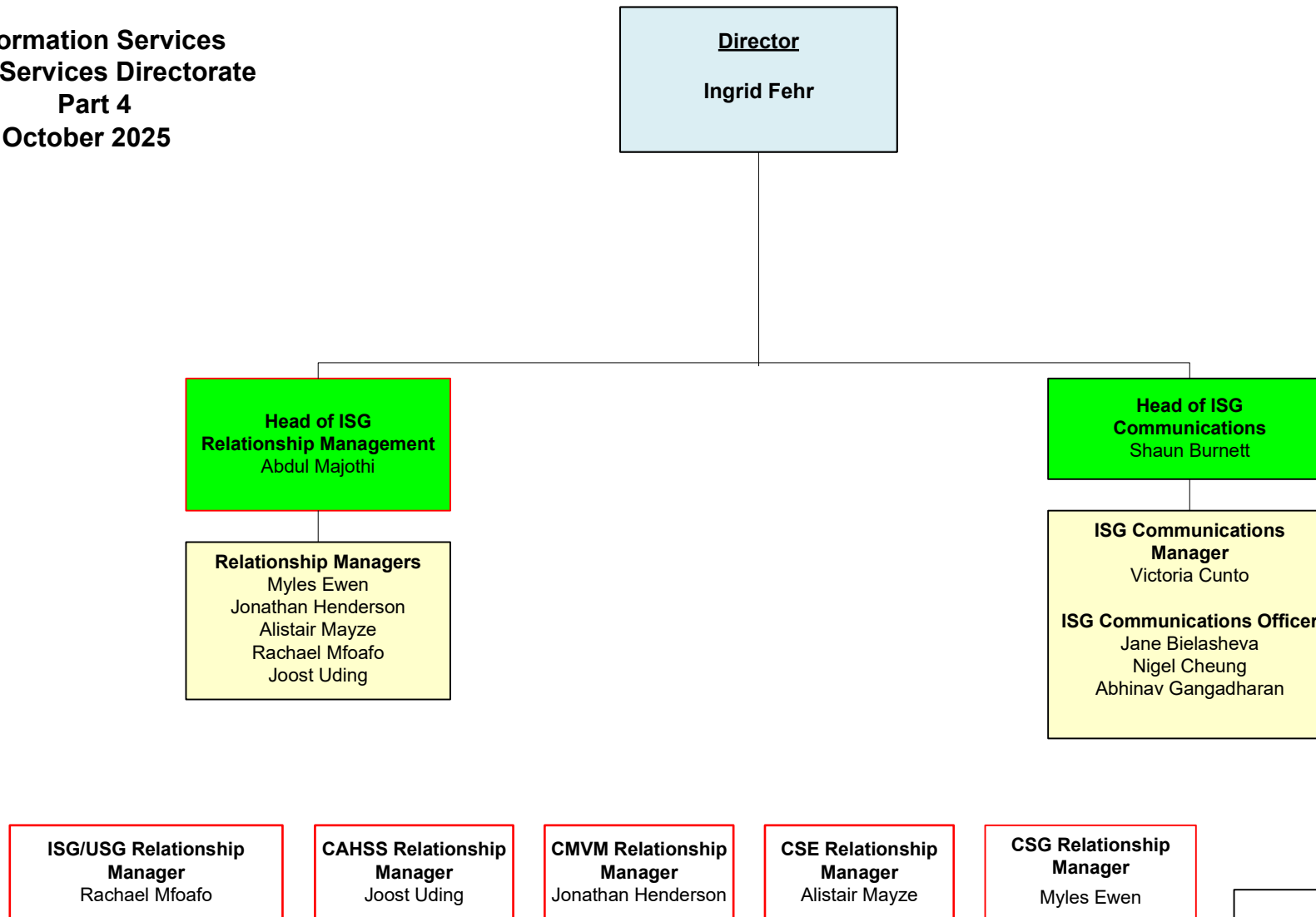


**Information Services
User Services Directorate
Part 3
October 2025**

KEY:
(s) = student designated
(se) = secondment
(e) = external service provider
(ml) - maternity leave
(ft) - fixed term
(ma) - modern apprentice
* = 2 posts



**Information Services
User Services Directorate
Part 4
October 2025**



KEY:
(s) = student designated
(se) = secondment
(e) = external service provider
* = 2 posts
= Aligned with College IT Strategy, line
Management remains within USD (Head of
Relationship Management)