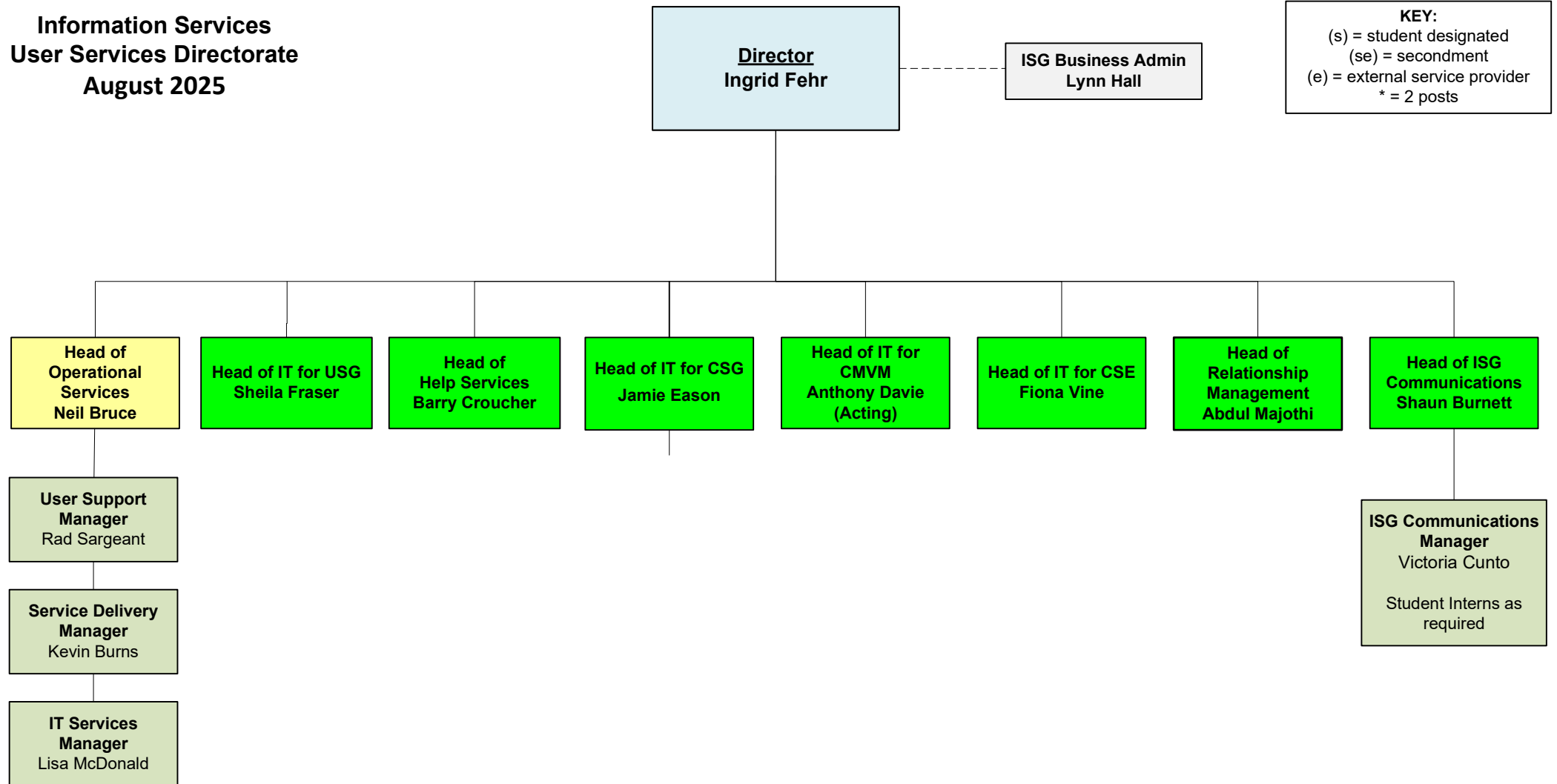
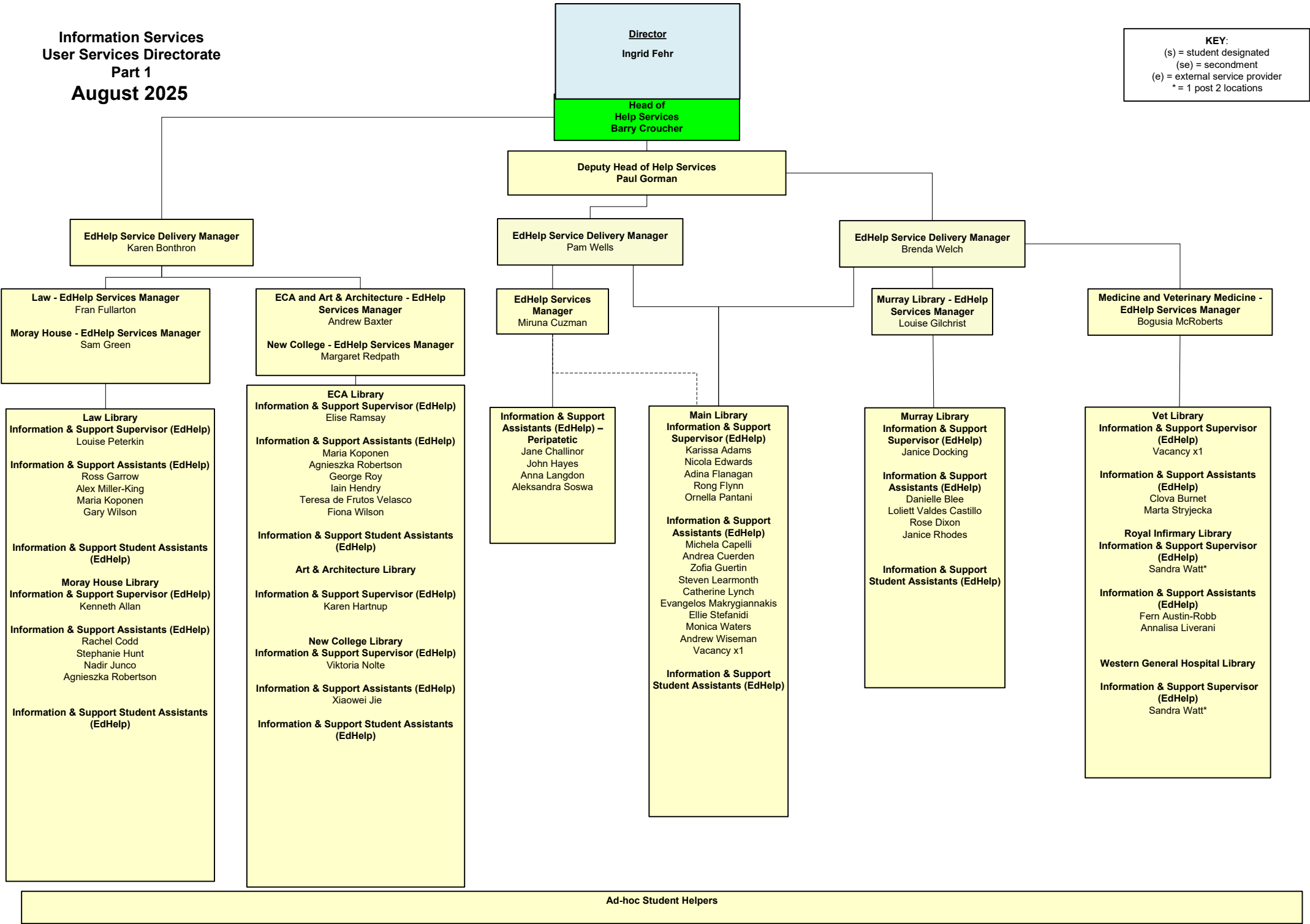


**Information Services
User Services Directorate
August 2025**



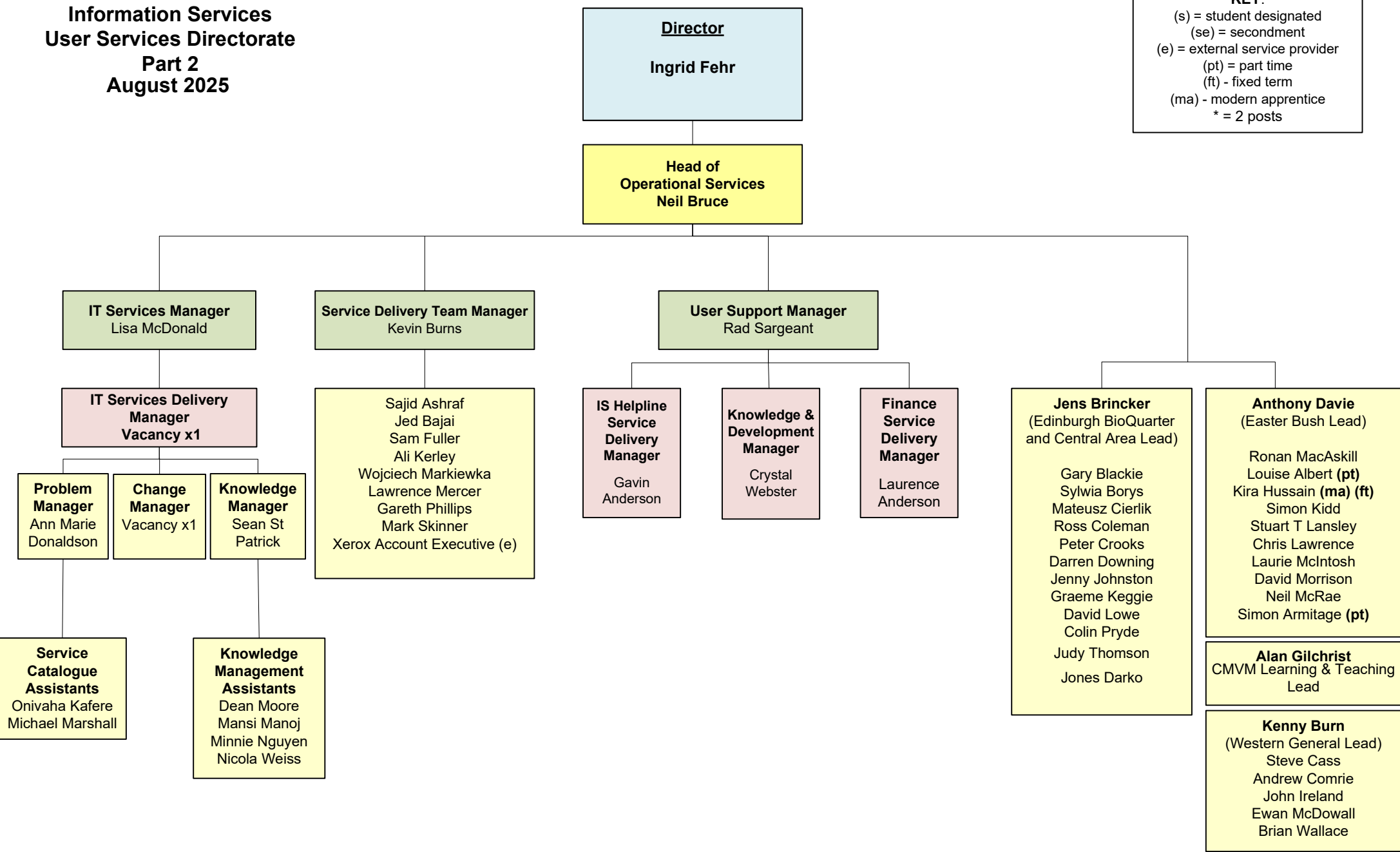
Information Services
User Services Directorate
Part 1
August 2025

KEY:
(s) = student designated
(se) = secondment
(e) = external service provider
* = 1 post 2 locations



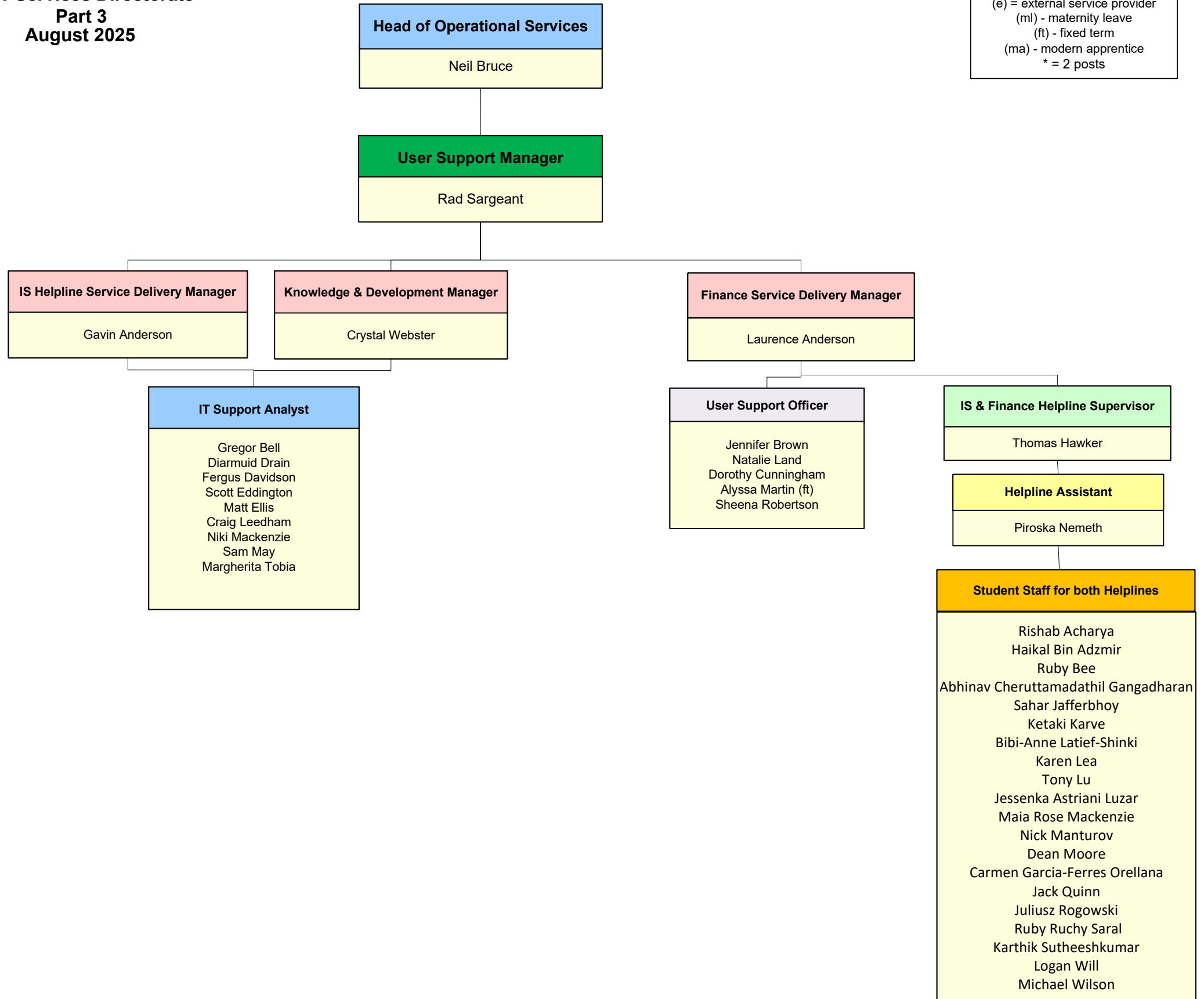
Information Services
User Services Directorate
Part 2
August 2025

KEY:
(s) = student designated
(se) = secondment
(e) = external service provider
(pt) = part time
(ft) - fixed term
(ma) - modern apprentice
* = 2 posts

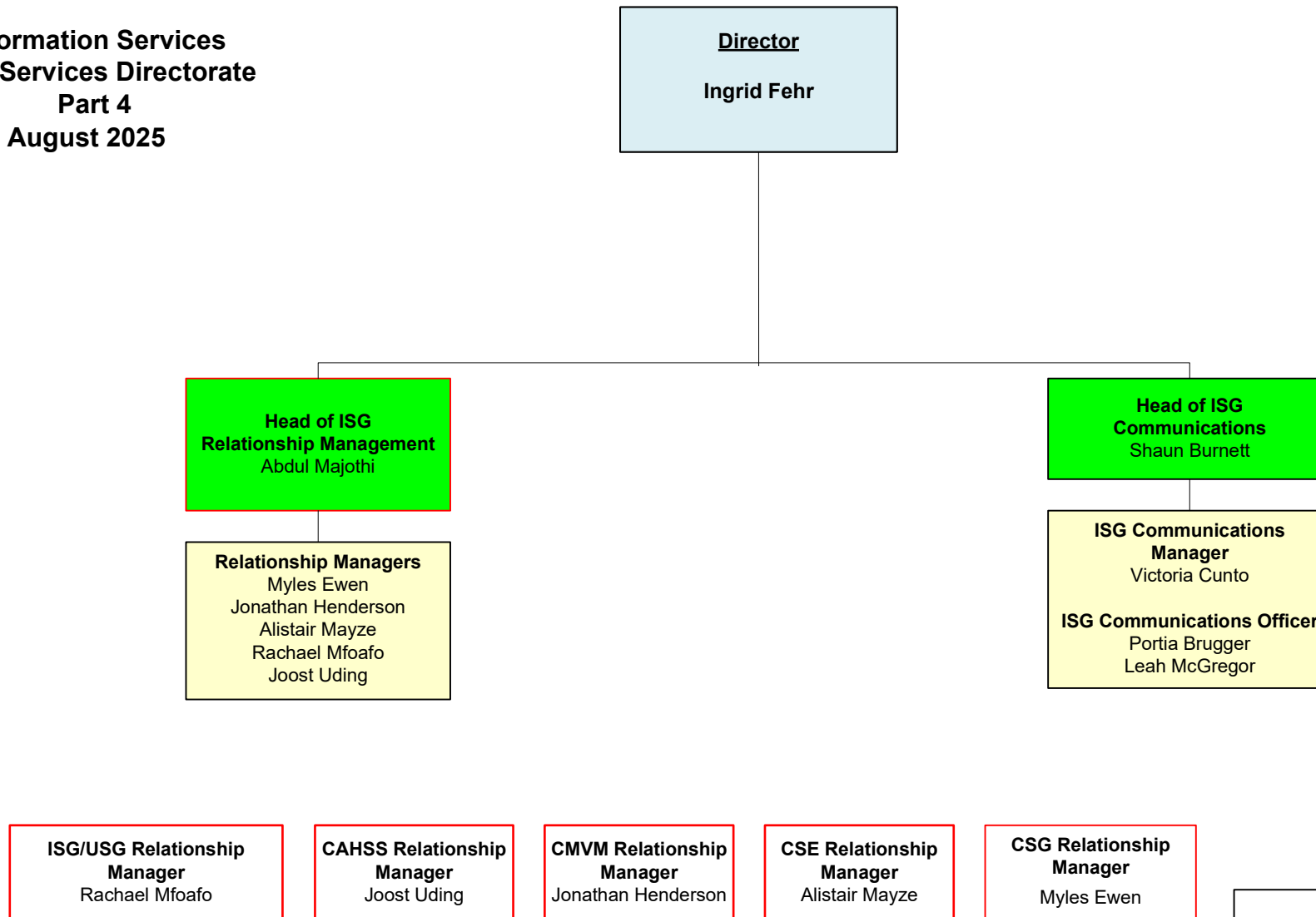


**Information Services
User Services Directorate
Part 3
August 2025**

KEY:
(s) = student designated
(se) = secondment
(e) = external service provider
(ml) - maternity leave
(ft) - fixed term
(ma) - modern apprentice
* = 2 posts



**Information Services
User Services Directorate
Part 4
August 2025**



KEY:
(s) = student designated
(se) = secondment
(e) = external service provider
* = 2 posts
= Aligned with College IT Strategy, line Management remains within USD (Head of Relationship Management)