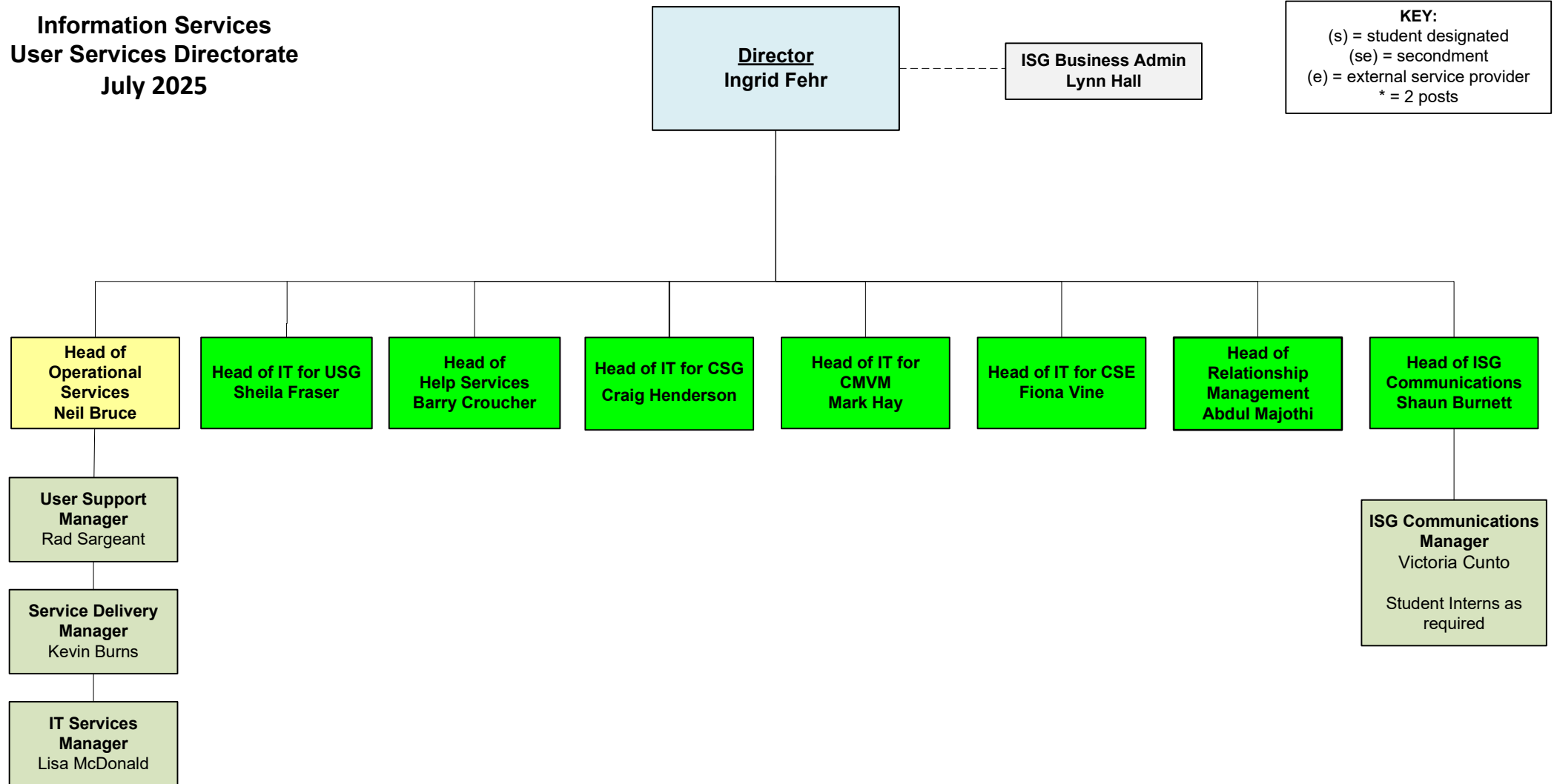
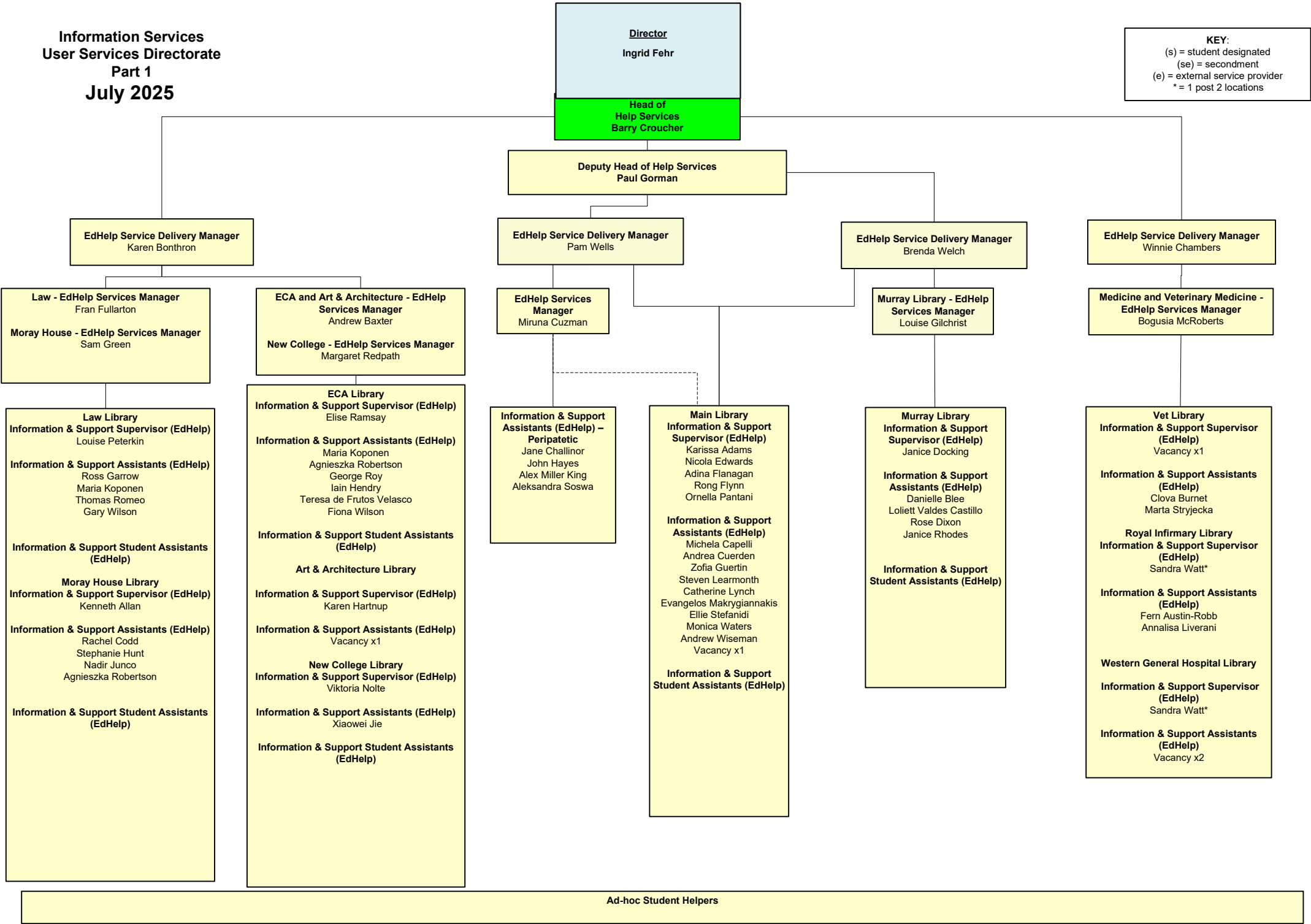


**Information Services
User Services Directorate
July 2025**

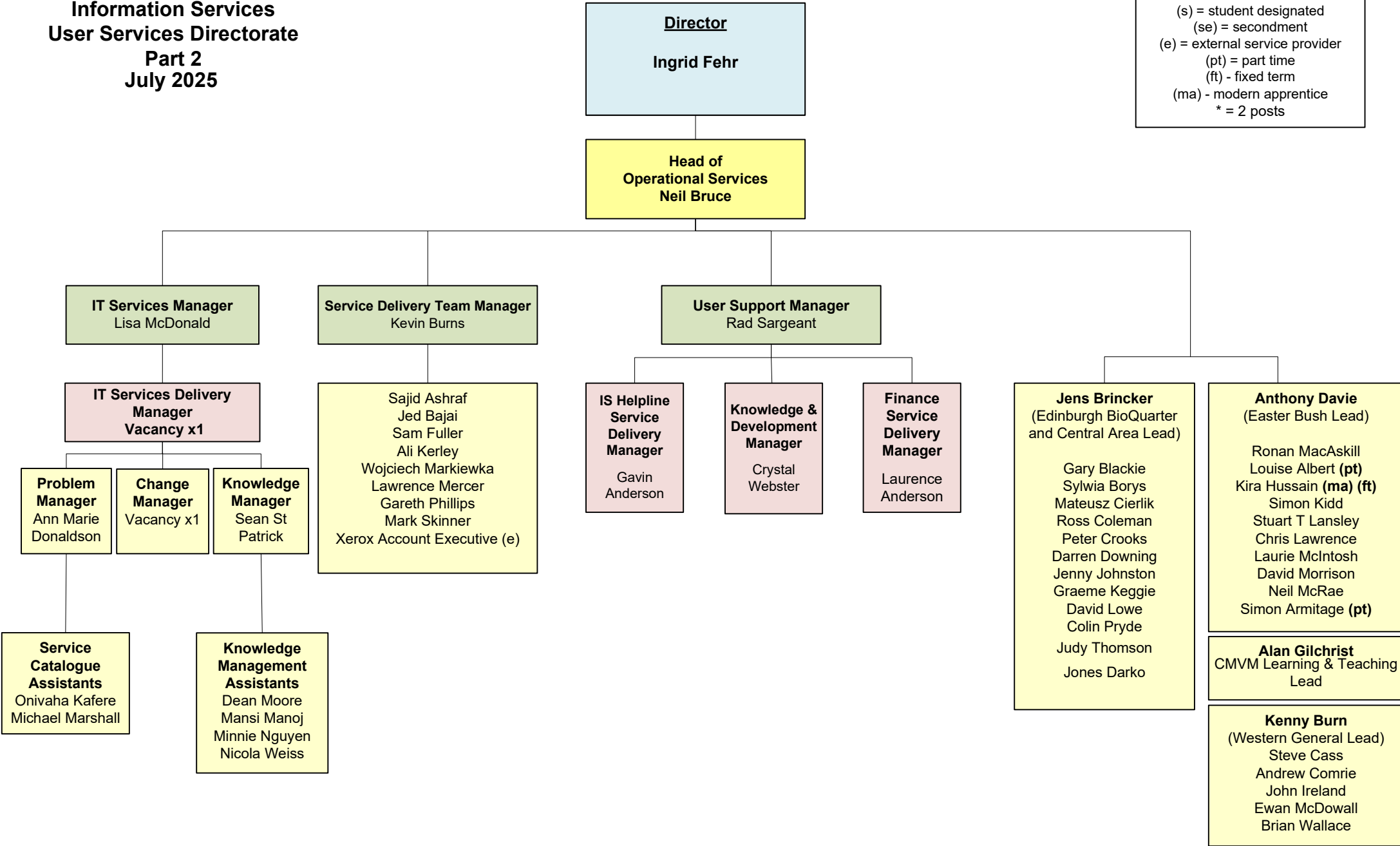


Information Services
User Services Directorate
Part 1
July 2025



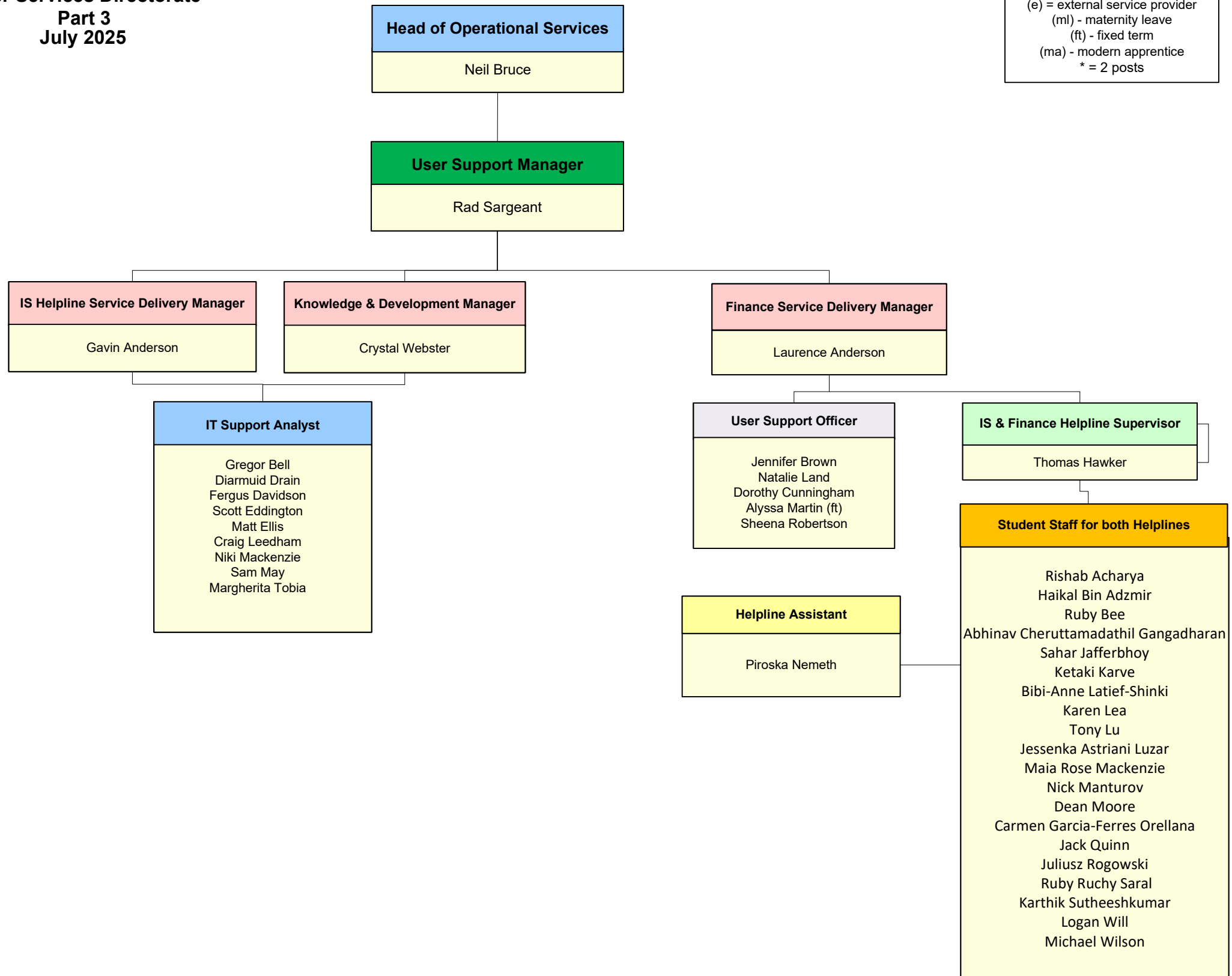
Information Services
User Services Directorate
Part 2
July 2025

KEY:
(s) = student designated
(se) = secondment
(e) = external service provider
(pt) = part time
(ft) - fixed term
(ma) - modern apprentice
* = 2 posts

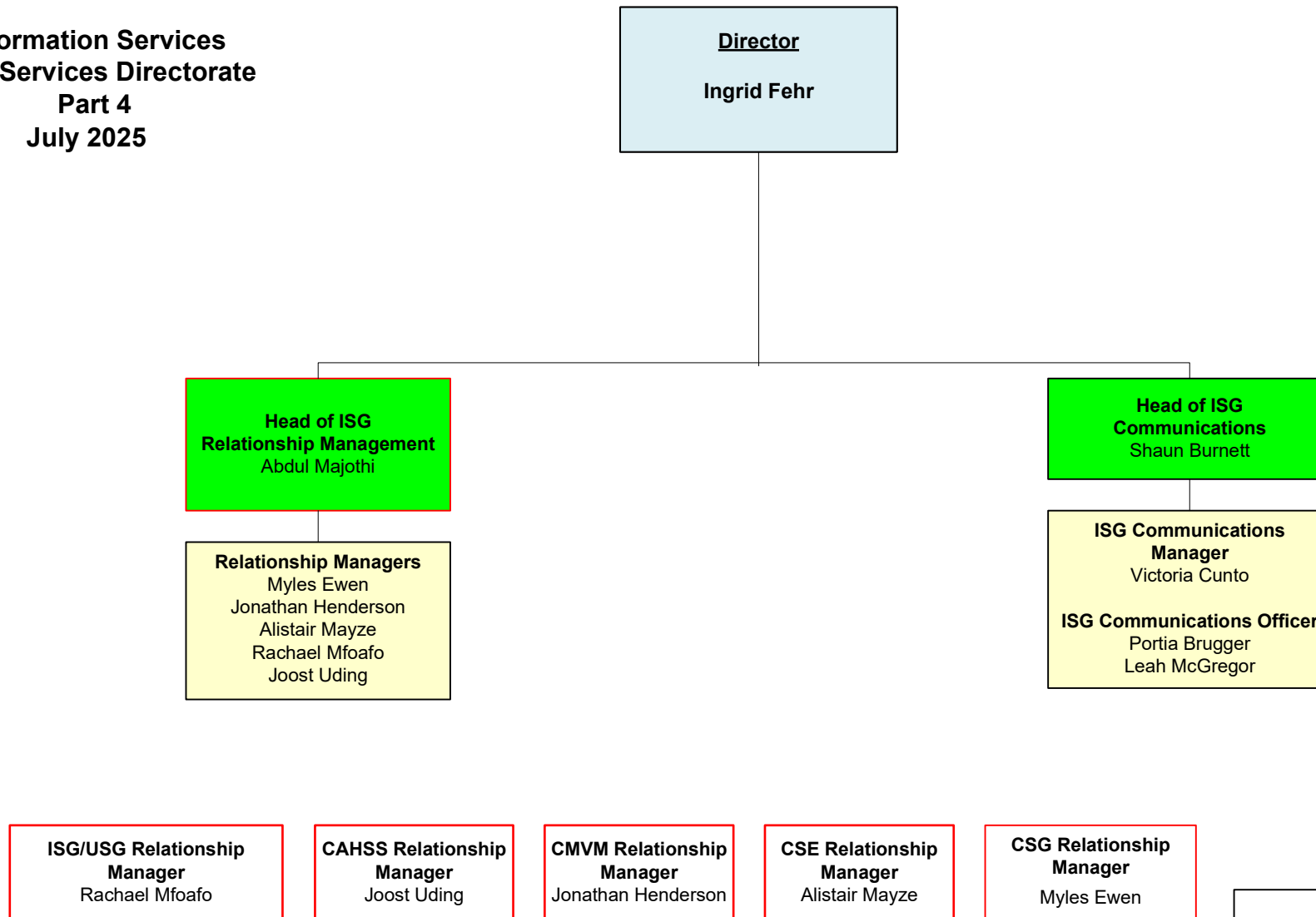


**Information Services
User Services Directorate
Part 3
July 2025**

KEY:
(s) = student designated
(se) = secondment
(e) = external service provider
(ml) - maternity leave
(ft) - fixed term
(ma) - modern apprentice
* = 2 posts



Information Services
User Services Directorate
Part 4
July 2025



KEY:
(s) = student designated
(se) = secondment
(e) = external service provider
* = 2 posts
= Aligned with College IT Strategy, line Management remains within USD (Head of Relationship Management)