



The Secret Sensor

# Activity 1

Where could the sensor be?  
Discussion



## **Learning intention**

Interpret, ask questions about and analyse the data.

## **Success criteria**

- I can discuss some variables in the data.
- I can spot and discuss patterns in the data.
- I can compare two sets of data from different sensors.
- I can work well in groups.
- I can back up my arguments using the data.

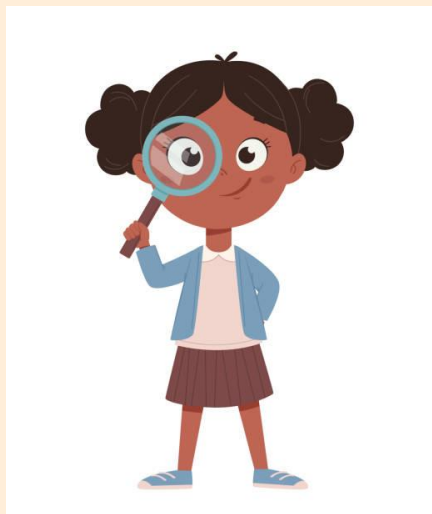
# Presenting arguments

## Secret Sensor



Present your findings to the class

Share and present your research findings to the class.



Hiding the Secret Sensor

# Activity 2

Hiding it!



## **Learning intention**

Predict, critique and question data sets.

## **Success criteria**

- I can predict and discuss what data might be collected.
- I can work well in a pair.
- I can use persuasive writing to present my case.
- I can make links between our environment and data.
- I can demonstrate my creativity skills.





Finding it

# Activity 3

Finding the secret sensor



## **Learning intention**

Interpret environmental data in order to locate the sensor.

## **Success criteria**

- I can ask questions about the data.
- I can question what is missing from the data.
- I can link the data sets to my own environment.
- I can create investigative methods to manipulate the data.
- I can record and present my findings.

# Plenary/Challenge

Sharing and extending our learning



## **Learning intention**

Utilise my knowledge and share it

## **Success criteria**

I can predict data sets.

I can link data collection to my environment.

I can work well in a team.

I can create investigative methods to manipulate the data.

I can record and present my findings clearly.

I can answer questions about my learning