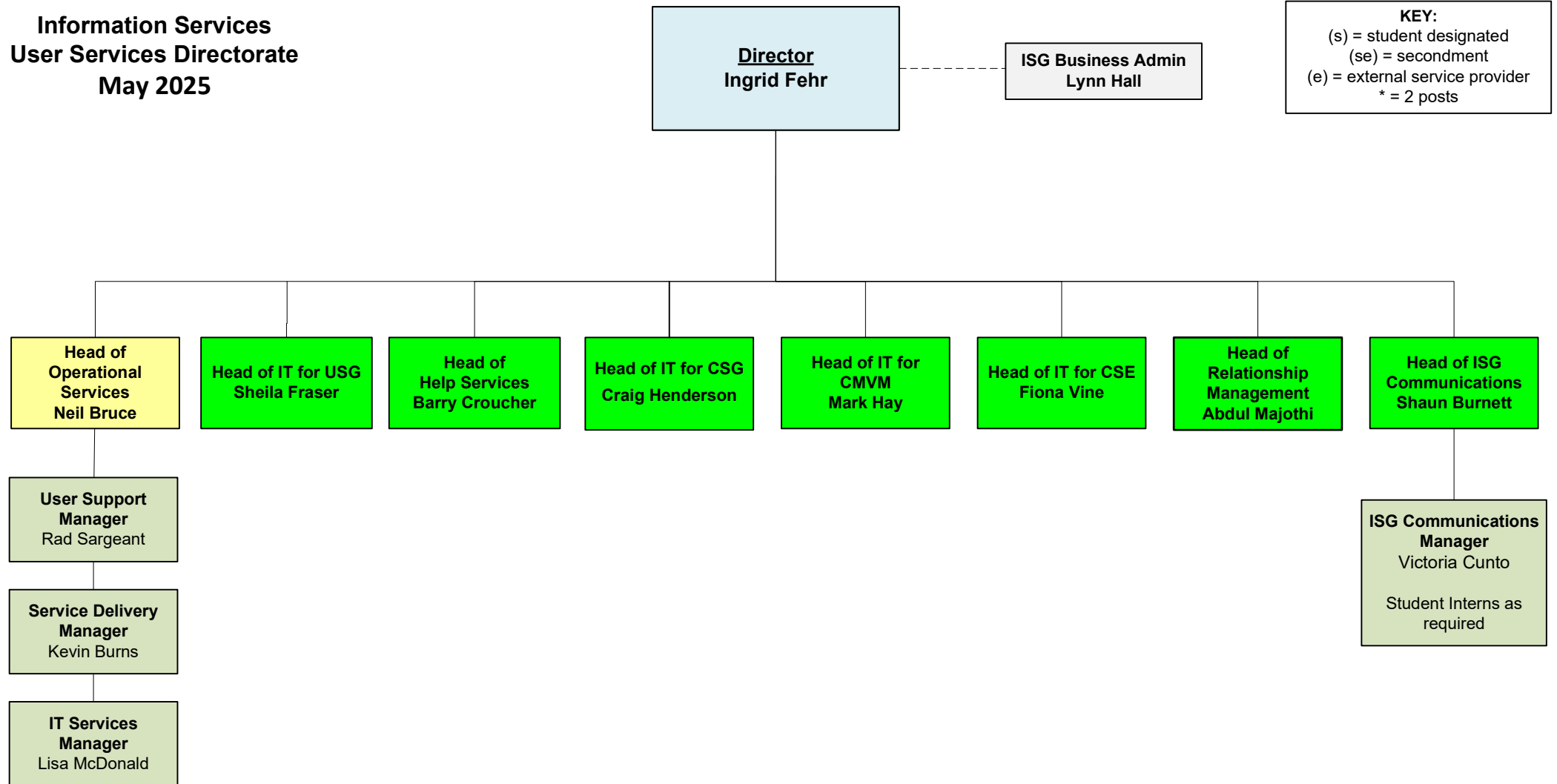
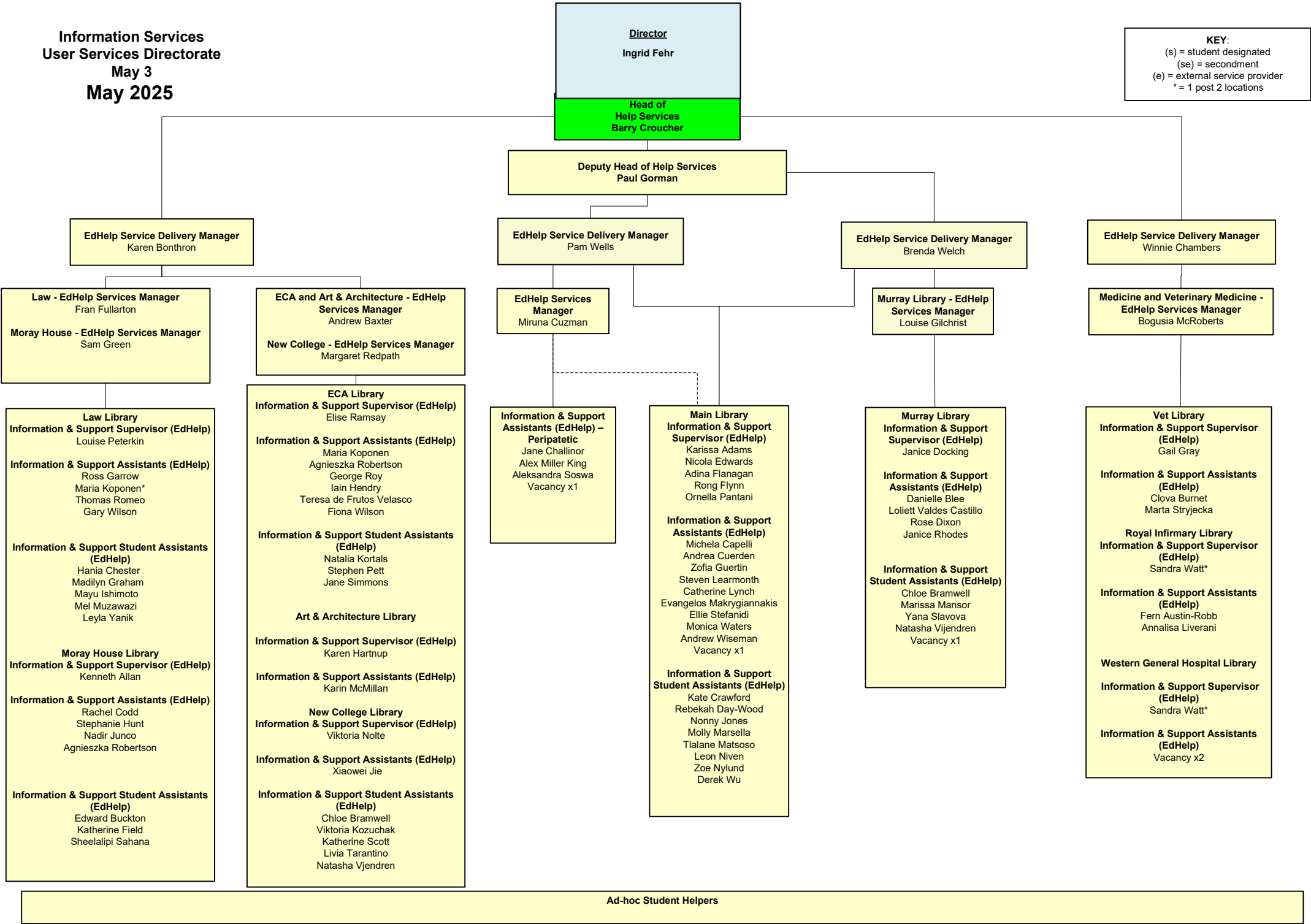


**Information Services
User Services Directorate
May 2025**

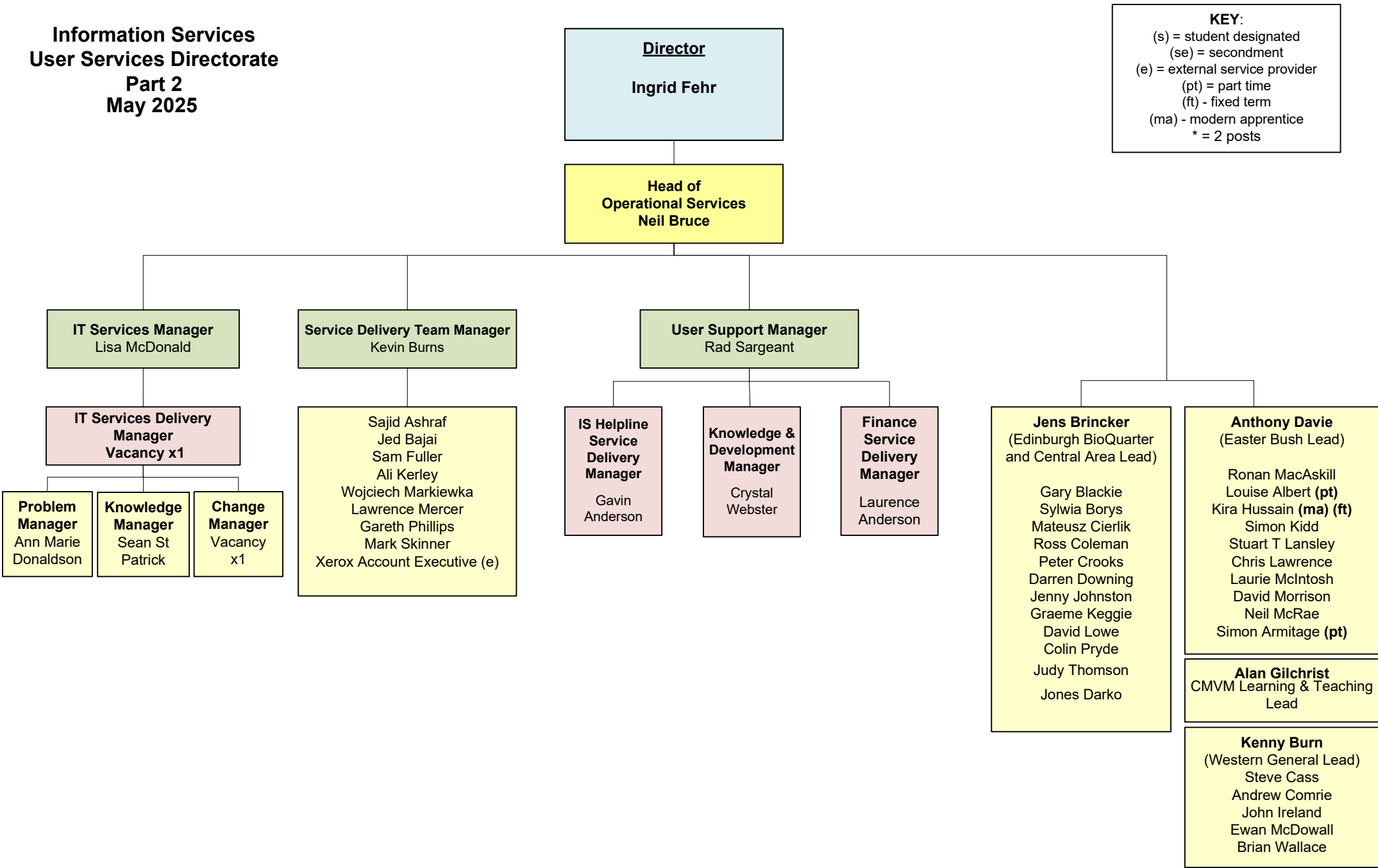


Information Services
User Services Directorate
May 3
May 2025

KEY:
(s) = student designated
(se) = secondment
(e) = external service provider
* = 1 post 2 locations

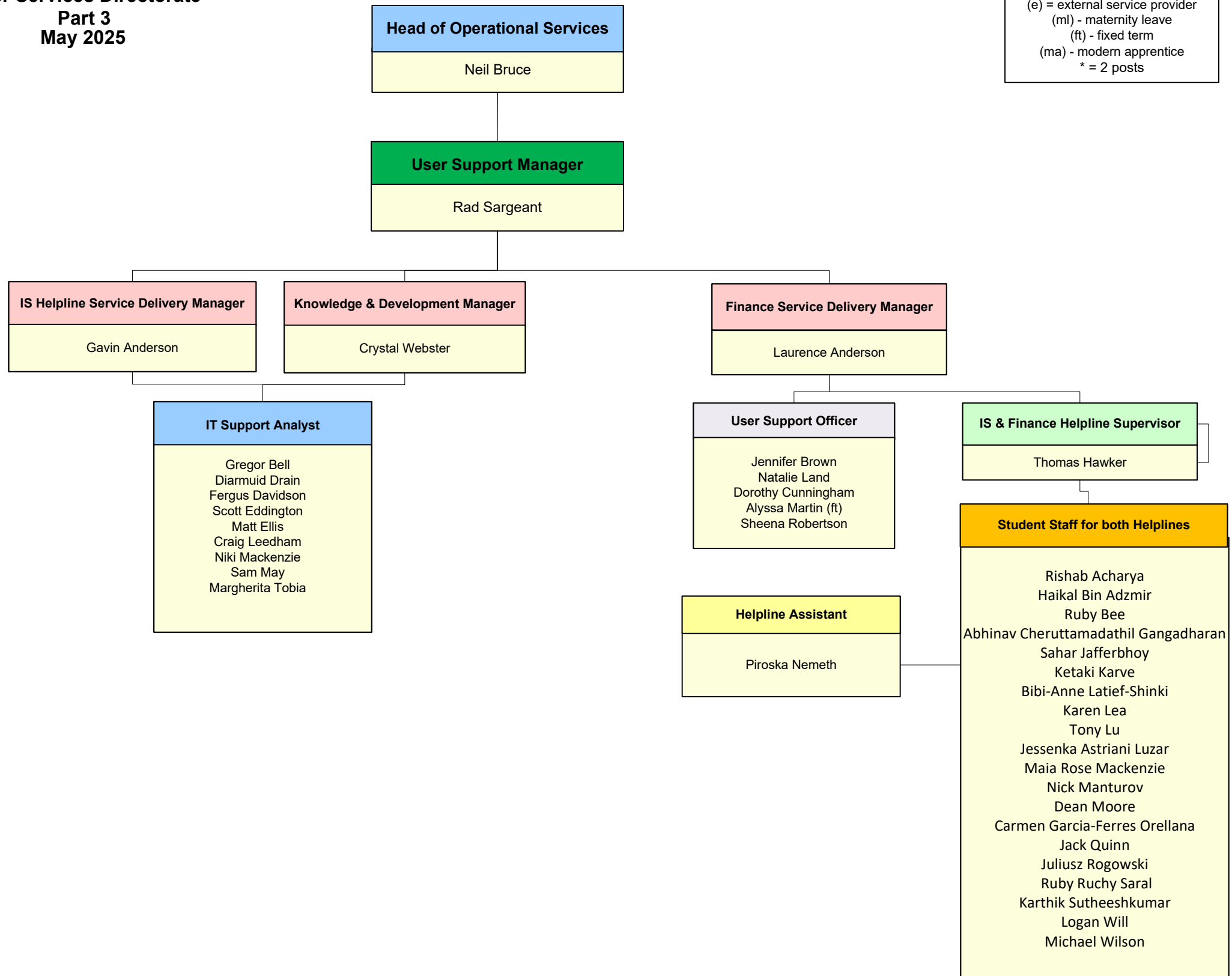


Information Services
User Services Directorate
Part 2
May 2025

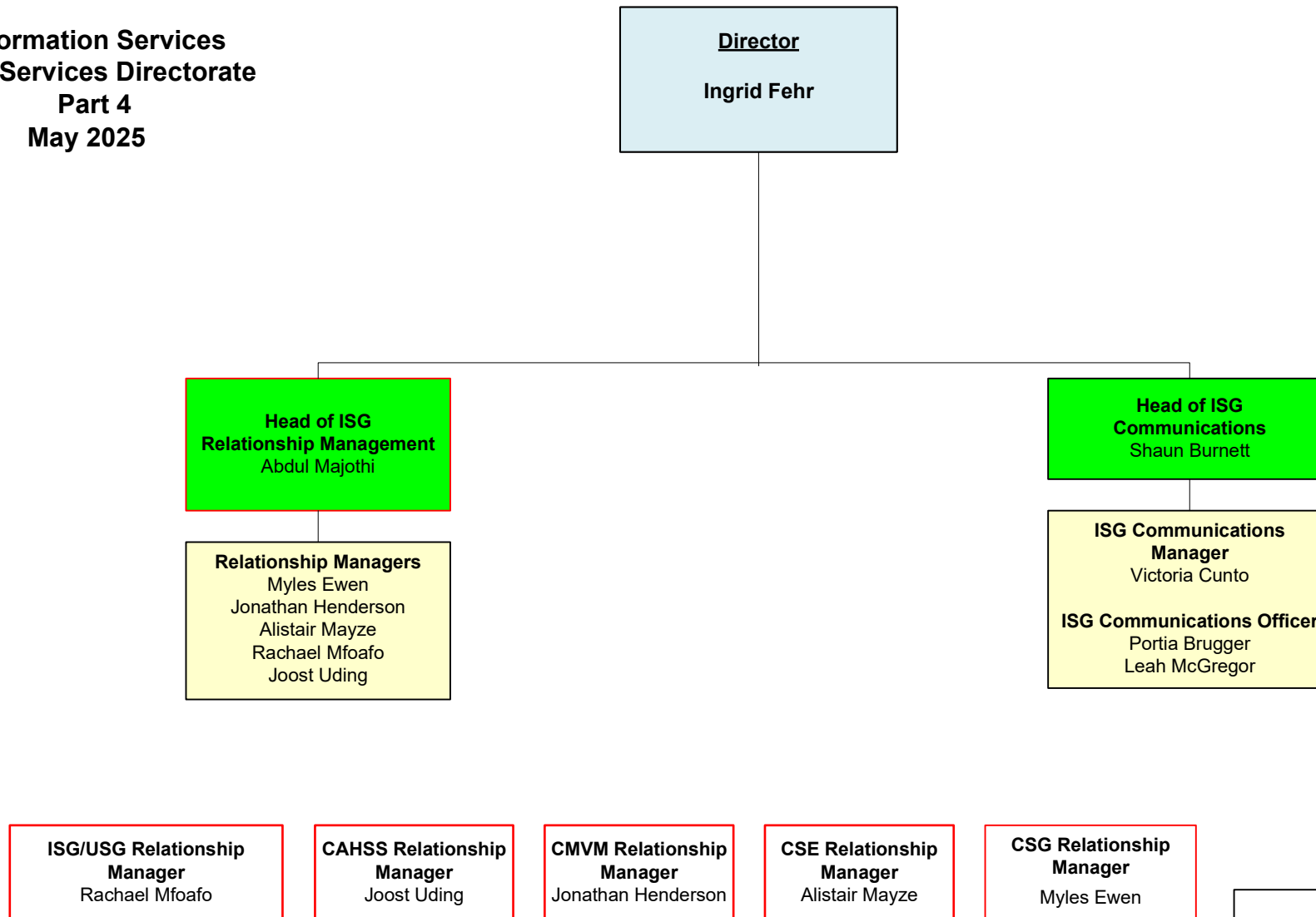


**Information Services
User Services Directorate
Part 3
May 2025**

KEY:
(s) = student designated
(se) = secondment
(e) = external service provider
(ml) - maternity leave
(ft) - fixed term
(ma) - modern apprentice
* = 2 posts



**Information Services
User Services Directorate
Part 4
May 2025**



KEY:
(s) = student designated
(se) = secondment
(e) = external service provider
* = 2 posts
= Aligned with College IT Strategy, line Management remains within USD (Head of Relationship Management)