

**Library and University Collections
November 2024**

**Director of
Library & University Collections**
Jeremy Upton

Director's Office Administration Team
Sarah Maguire

**Associate Director Library
Academic Support**

**Associate Director Library
Research Support**

**Associate Director Digital
Library**

**Associate Director Collections
Services**

**Associate Director Heritage
Collections (Research &
Curatorial)**

**Associate Director Heritage
Collections (Access &
Engagement)**

AHSS College Lead
Christine Love-
Rodgers

MVM College Lead
Marshall Dozier

S&E College Lead
Fiona Brown

Research Data
Support

Research
Information
Systems

Scholarly
Communications

Open Research
Team

Cultural Heritage
Digitisation Service

Development and
Systems

uCreate

Content Acquisition
& Access

Collections Lifecycle
Management

Metadata Services

Library Learning
Services

UCF Project

Research
Collections
Discovery &
Projects

Research
Collections

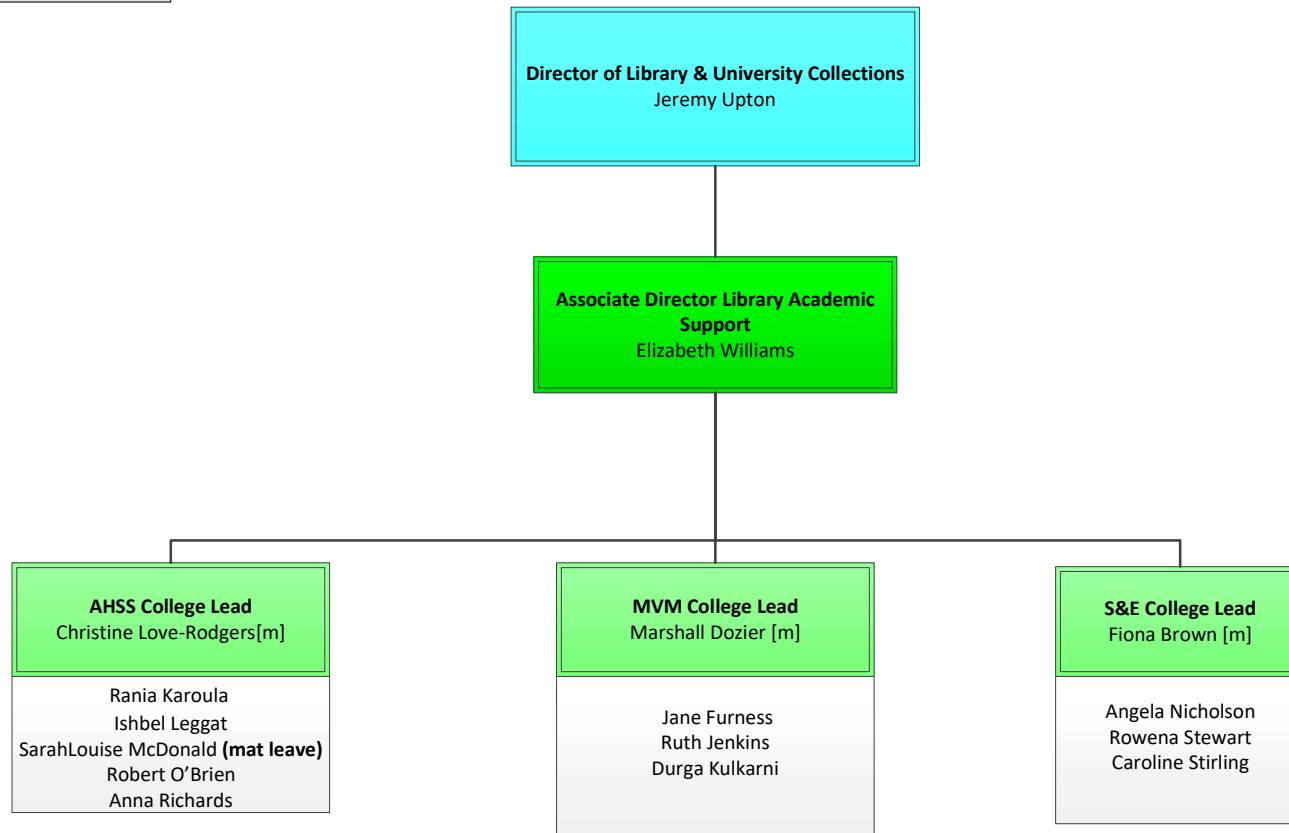
Lothian Health
Services Archive

Research Services

Civic Engagement

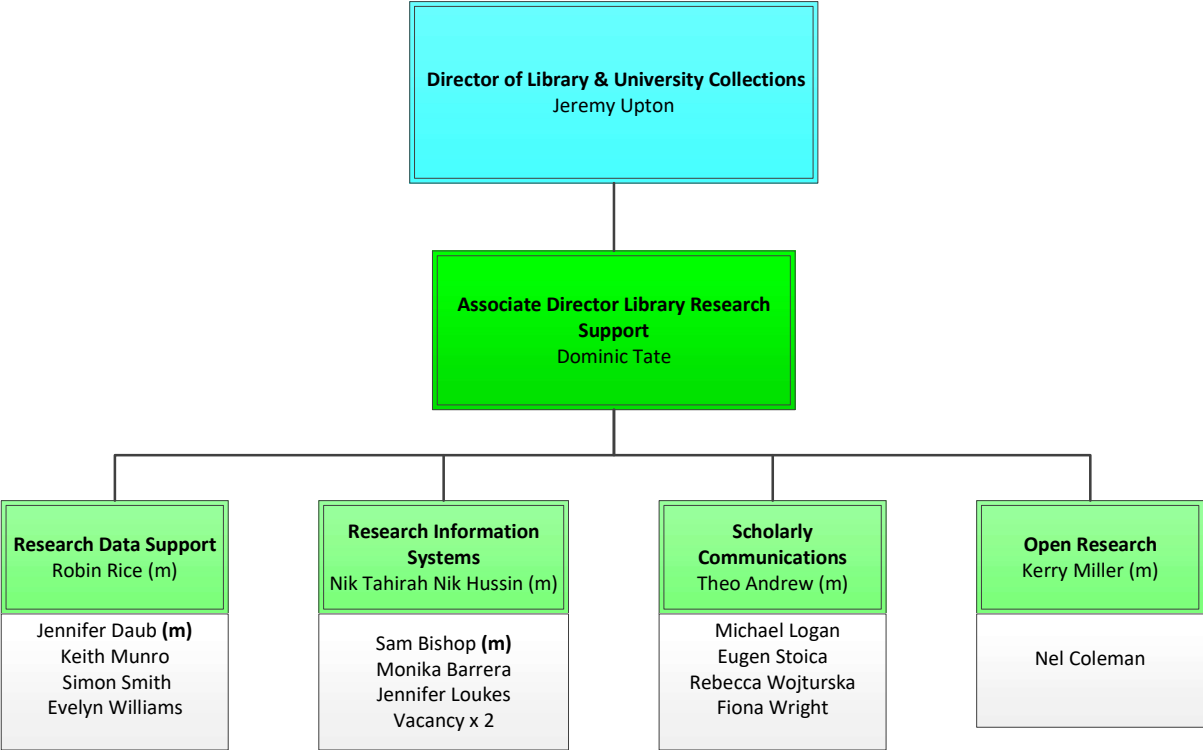
Conservation &
Collections
Management

Library Academic Support
November 2024

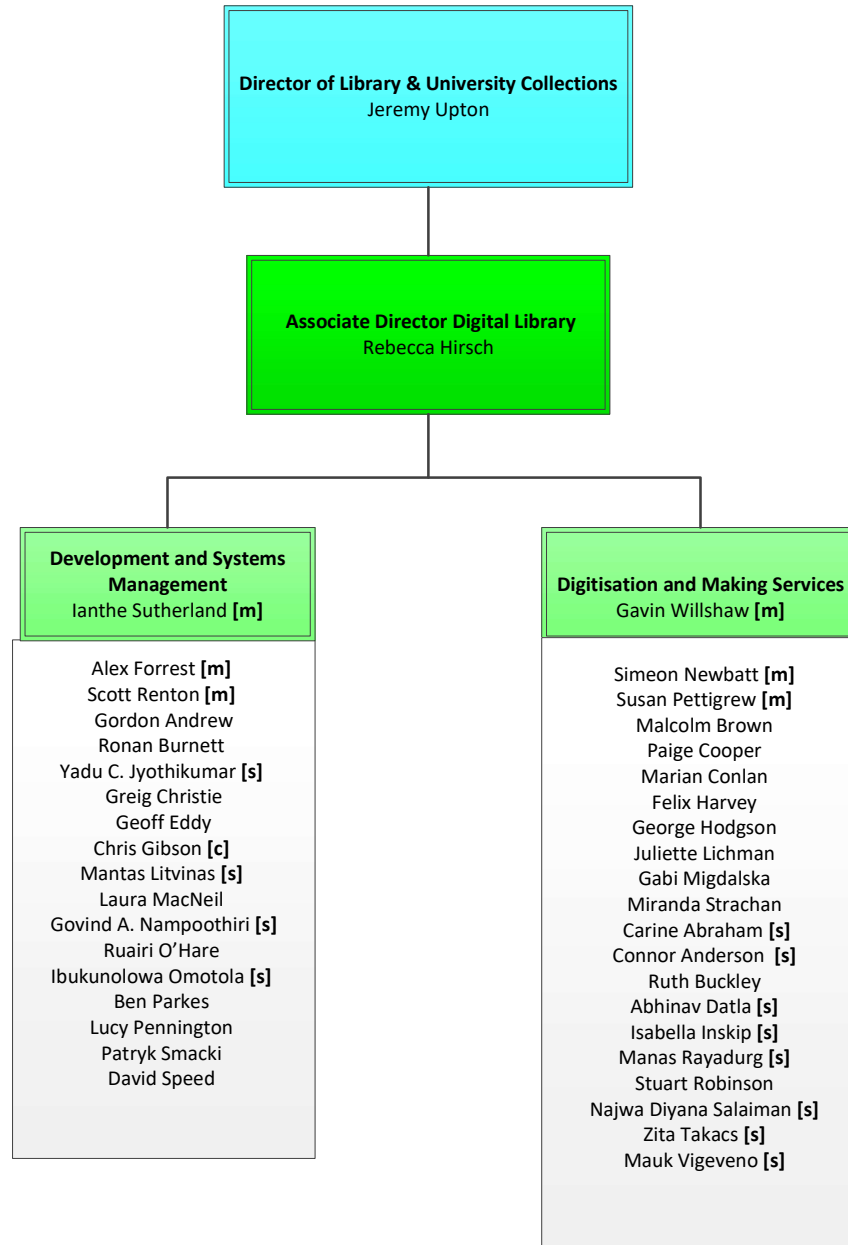


Key:
[m] Manager
[s] Student
[c] Contractor
[u] Unitemps
[se] Secondment

Library Research Support
November 2024

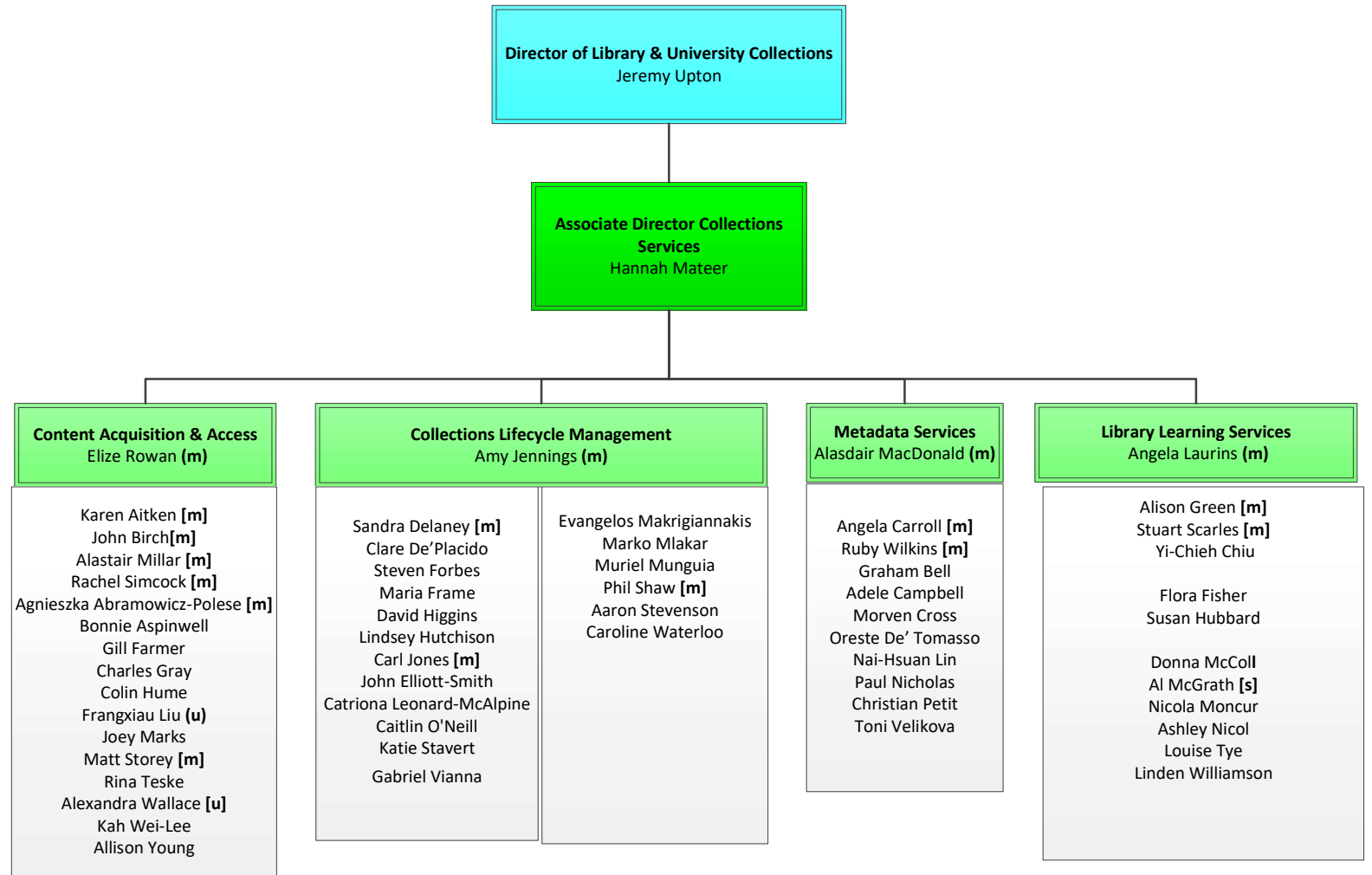


Key:
[m] Manager
[s] Student
[c] Contractor
[u] Unitemps
[se] Secondment



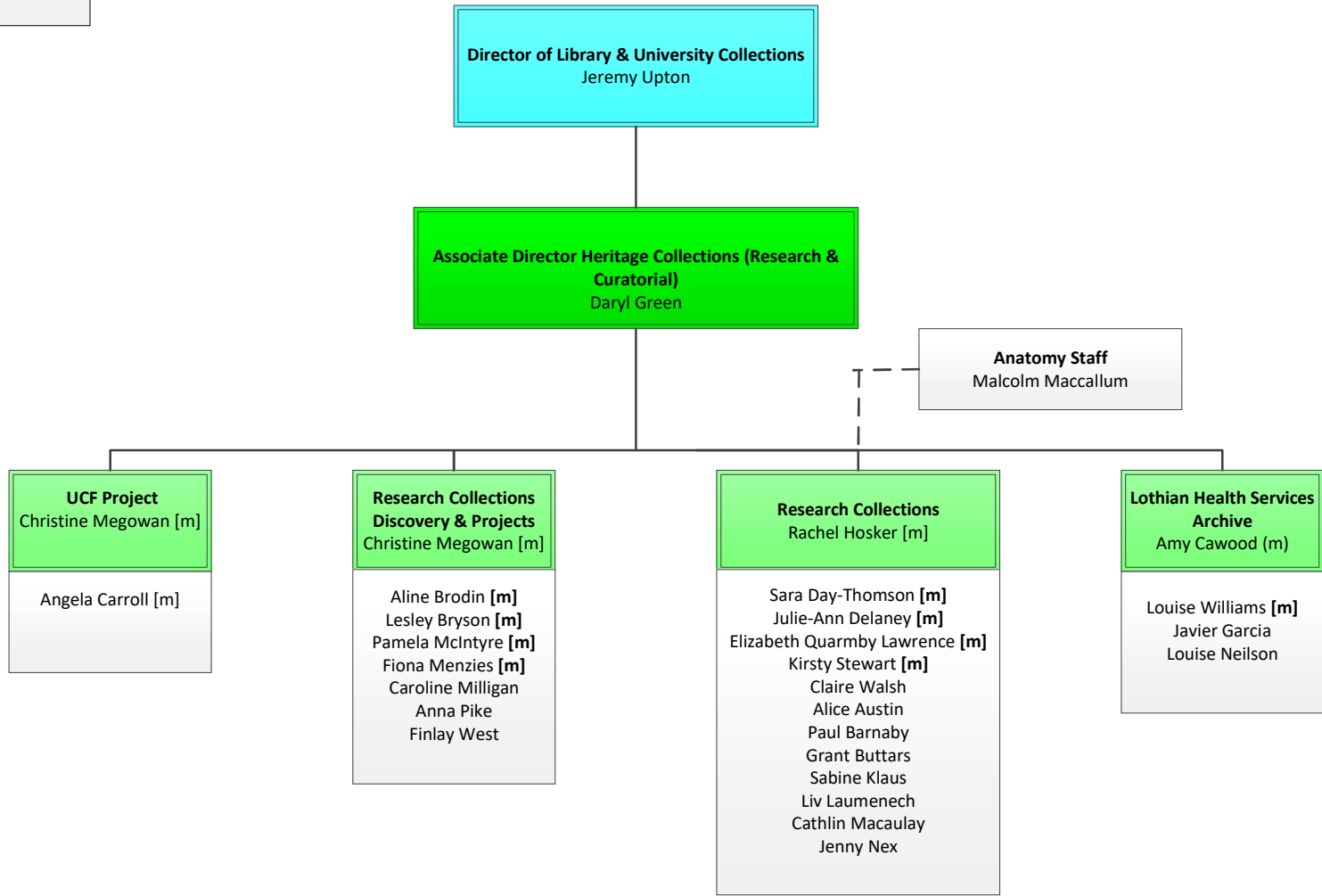
Key:
[m] Manager
[s] Student
[c] Contractor
[u] Unitemps
[se] Secondment

**Collections Services
November 2024**



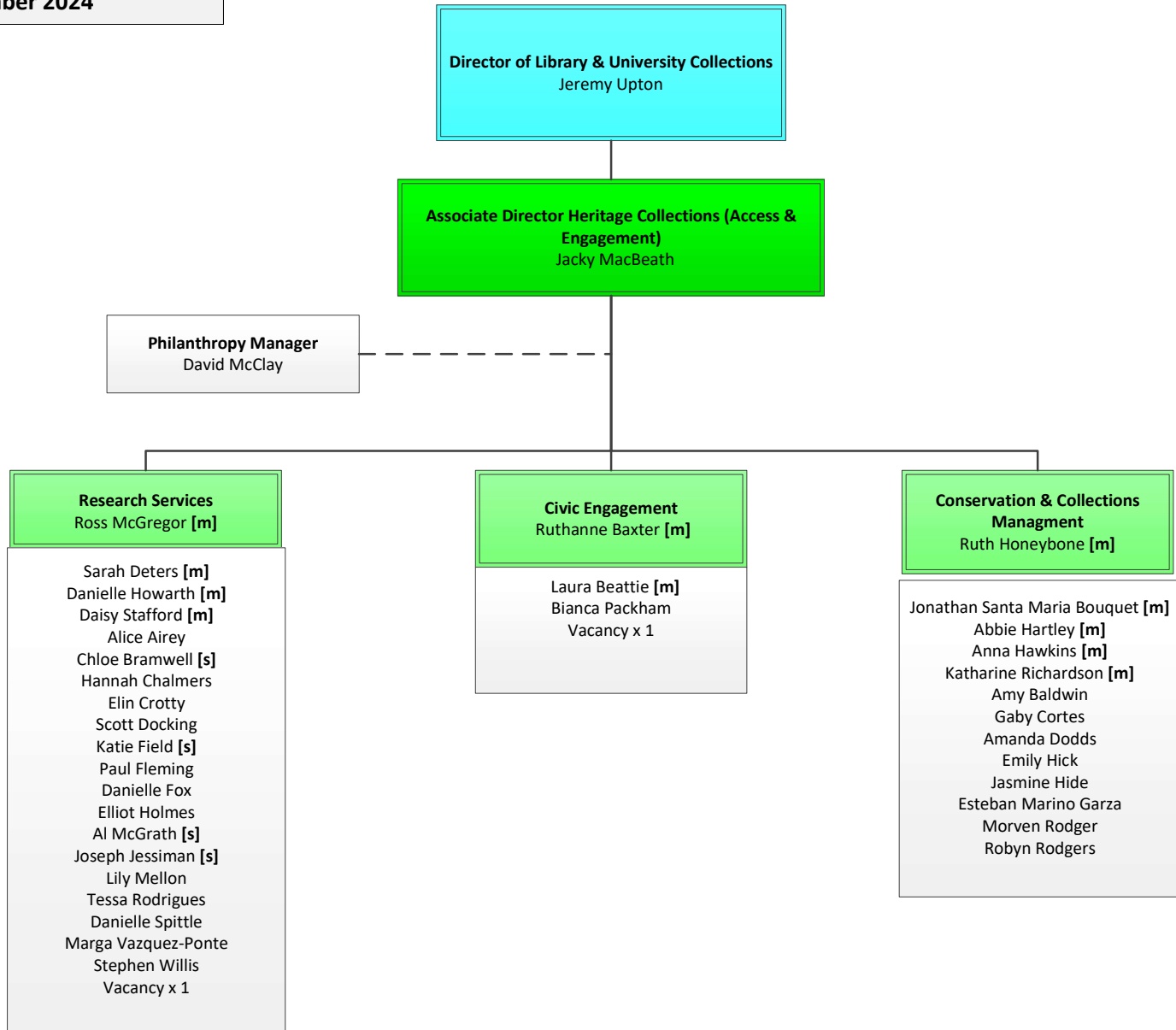
Key:
 [m] Manager
 [s] Student
 [c] Contractor
 [u] Unitemps
 [se] Secondment

Heritage Collections (Research & Curatorial)
November 2024



Key:
[m] Manager
[s] Student
[c] Contractor
[u] Unitemps
[se] Secondment

Heritage Collections (Access & Engagement)
November 2024



Key:
[m] Manager
[s] Student
[c] Contractor
[u] Unitemps
[se] Secondment

